



235243

## Cisco Small Business

**MGBBX1 1000 Base-BX Mini-GBIC SFP Transceiver**

**MFEFX1 100 Base-FX Mini-GBIC SFP Transceiver**

**MGBLX1 1000 Base-LX Mini-GBIC SFP Transceiver**

**MFEFX1 100BASE-FX Mini-GBIC SFP Transceiver**

**MFELX1 100BASE-LX Mini-GBIC SFP Transceiver**

**MGBSX1 Gigabit SX Mini-GBIC SFP Transceiver**

**MGBLH1 Gigabit LH Mini-GBIC SFP Transceiver**

**MGBT1 Gigabit 1000 Base-T Mini-GBIC SFP Transceiver**

## Package Contents

- Mini-GBIC SFP Transceiver
- Documentation pointer card

日本語のクイック スタート ガイドは次の Web サイトから入手できます。

[www.cisco.com/jp/go/sb](http://www.cisco.com/jp/go/sb)

# 1

## Connecting the Transceiver



### WARNING

Optical SFPs use a small laser to generate the fiber-optic signal. Because invisible laser radiation may be emitted from the aperture of the port when no fiber cable is connected, avoid exposure to laser radiation and do not stare into open apertures. Keep the optical transmit and receive ports covered whenever a cable is not connected to the port.

### Connecting the Cisco MGBBX1, MFEBX1, MGBLX1, MFEFX1, MFELX1, MGBSX1, and MGBLH1

**STEP 1** Insert the mini-GBIC SFP module with the printed side up and the rubber port cap facing out.



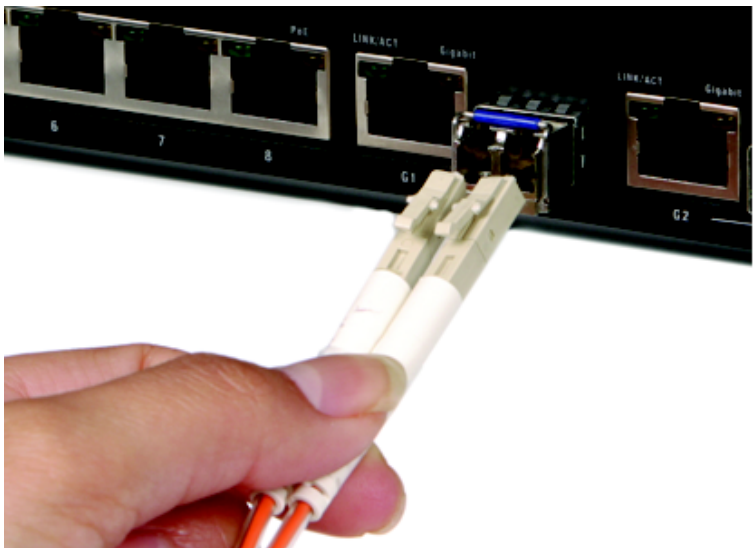
235242

**STEP 2** Remove the mini-GBIC SFP module's rubber port cap.



238244

**STEP 3** Connect the fiber cable's LC connector to the mini-GBIC SFP module's port.



238246

**STEP 4** Connect the other end of the cable to an SFP module to verify that the fiber connection is complete.

For the Cisco MGBBX1, use the Cisco GLC-BX-D as the downstream SFP. For the Cisco MFEFBX1, use the Cisco GLC-FE-100BX-D as the downstream SFP. The Cisco MGBBX1 and the Cisco MFEFBX1 support upstream only.

---

## Connecting the Cisco MGBT1

---

**STEP 1** Insert the gigabit SFP module with the printed side up and the pull tab facing out.

**STEP 2** Lock the gigabit SFP module in place.

**STEP 3** Connect the cable to the gigabit SFP Module's port.

**STEP 4** Connect the other end of the cable to the switch.

---

## 2

# Removing the Transceiver

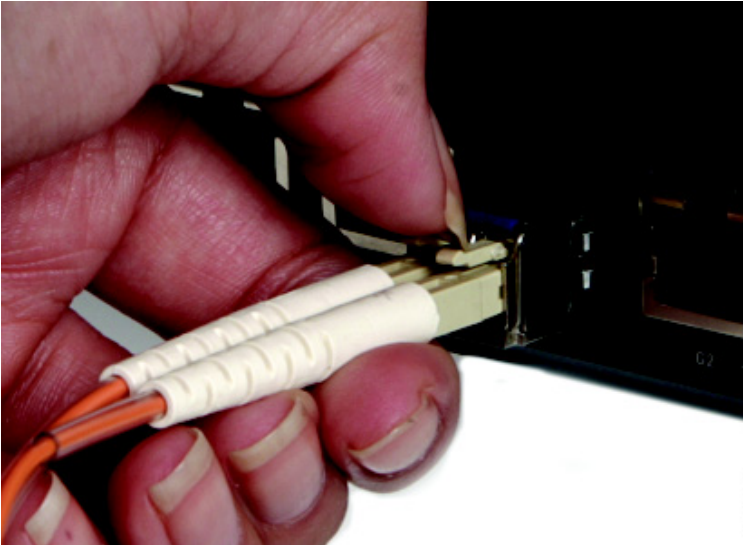
## Removing the Cisco MGBBX1, MFEBX1, MGBLX1, MFEFX1, MFELX1, MGBSX1, and MGBLH1



### WARNING

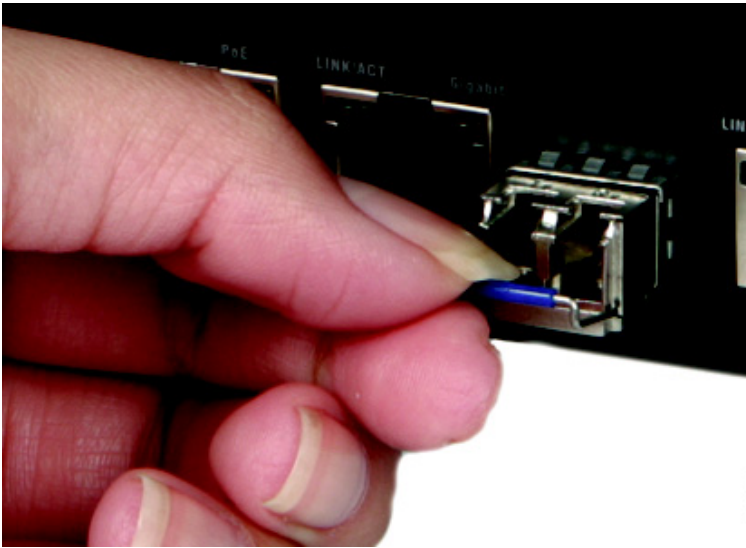
Optical SFPs use a small laser to generate the fiber-optic signal. Because invisible laser radiation may be emitted from the aperture of the port when no fiber cable is connected, avoid exposure to laser radiation and do not stare into open apertures. Keep the optical transmit and receive ports covered whenever a cable is not connected to the port.

**STEP 1** Press the fiber cable's connector and pull to remove the fiber cable from the mini-GBIC SFP module.



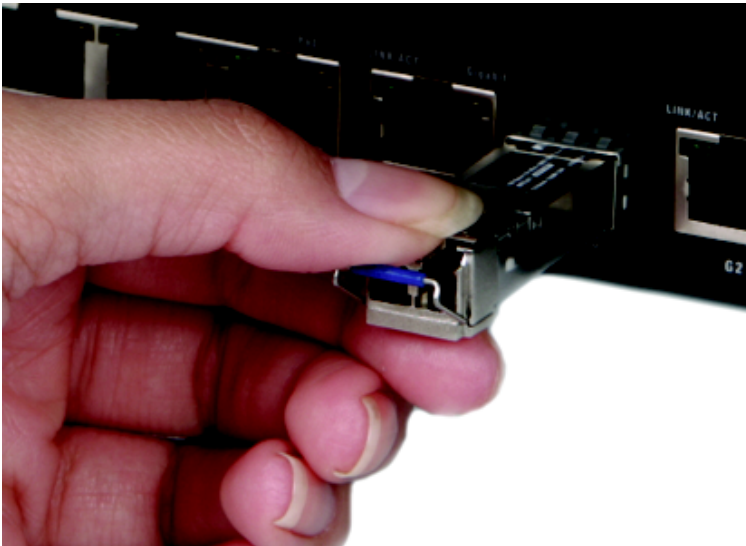
239247

**STEP 2** Pull the module's bail latch down.



239248

**STEP 3** Remove the mini-GBIC SFP module.



235249

## Removing the Cisco MGBT1

**STEP 1** Press the RJ-45 connector's tab and pull to remove the cable from the gigabit SFP module.

**STEP 2** To remove the gigabit SFP module, begin by pulling the module's pull tab.

**STEP 3** Remove the Gigabit SFP Module.

### 3

## Switch Compatibility List

Model Number	MFEBX1/ MFEFX1/ MFELX1	Model Number	MFEBX1/ MFEFX1/ MFELX1
SR224G	Not supported	SF102-24	Not supported
SR2024C	Not supported	SG102-24	Not supported
SR2024	Not supported	SG100-24	Not supported
SPS208G	1.0.2	SG300-20	All versions
SPS224G4	1.0.2	SG300-28	All versions
SPS2024	1.0.2	SG300-28P	All versions
SRW208G	1.0.4	SG300-52	All versions
SRW208L	1.0.4	SF300-24	All versions
SRW208P	1.0.4	SF300-24P	All versions
SRW208MP	1.0.4	SF300-48	All versions
SRW2008	1.0.4	SF300-48P	All versions
SRW2008P	1.0.4	SG300-10	All versions
SRW2008MP	1.2.2b	SG300-10P	All versions
SRW224G4	1.2.2b*	SG300-10MP	All versions
SRW248G4	1.2.4*	SF302-08	All versions
SRW224G4P	1.2.4	SF302-08P	All versions
SRW248G4P	1.0.4	SF302-08MP	All versions
SRW2024P	1.2.2	ESW520	All versions
SRW2016	Not supported	ESW540	All versions
SRW2024	Not supported	ESW520-8P	All versions
SRW2048	Not supported	ESW540-8P	All versions
SRW224P	Not supported	SF200-24	All versions
SFE2000	3.0.0.17	SF200-24P	All versions
SFE2000P	3.0.0.17	SF200-48	All versions

Model Number	MFEBX1/ MFEFX1/ MFELX1	Model Number	MFEBX1/ MFEFX1/ MFELX1
SGE2000	3.0.0.17	SF200-48P	All versions
SGE2000P	3.0.0.17	SG200-18	All versions
SFE2010	2.0.1.75	SG200-26	All versions
SGE2010	1.0.2	SG200-26P	All versions
SLM224G2-CN	1.0.1	SG200-50	All versions
SLM224G	1.0.1	SG200-50P	All versions
SLM248G	1.0.1	SF200E-24	All versions
SLM224P	1.0.1	SF200E-24P	All versions
SLM248P	1.0.1	SF200E-48	All versions
SLM2024	1.0.1	SF200E-48P	All versions
SLM2048	1.0.1		
SLM224G4S	1.0.1		
SLM248G4S	1.0.4		

\* Requires manual configuration for the 100M SFP. See the following section.

## Manually Configuring the 100M SFP

**STEP 1** On the Port Configuration page, click **Detail**.

**STEP 2** In the **Port Configuration** popup window, select **eth 100M** in the SFP Speed field.

**STEP 3** Save your changes.

**STEP 4** Insert the 100M SFP module.



## 4

## Where to Go From Here

Support	
Cisco Small Business Support Community	<a href="http://www.cisco.com/go/smallbizsupport">www.cisco.com/go/smallbizsupport</a>
Cisco Small Business Support and Resources	<a href="http://www.cisco.com/go/smallbizhelp">www.cisco.com/go/smallbizhelp</a>
Phone Support Contacts	<a href="http://www.cisco.com/en/US/support/tsd_cisco_small_business_support_center_contacts.html">www.cisco.com/en/US/support/tsd_cisco_small_business_support_center_contacts.html</a>
Cisco Small Business Firmware Downloads	<a href="http://www.cisco.com/go/software">www.cisco.com/go/software</a> Select a link to download firmware for Cisco Small Business Products. No login is required.
Cisco Small Business Open Source Requests	<a href="http://www.cisco.com/go/smallbiz_opensource_request">www.cisco.com/go/smallbiz_opensource_request</a>
Product Documentation	
Cisco Small Business Network Accessories	<a href="http://www.cisco.com/go/smallbiznetworkaccessories">www.cisco.com/go/smallbiznetworkaccessories</a>
Cisco Small Business Smart Switches	<a href="http://www.cisco.com/go/smallbizsmartswitches">www.cisco.com/go/smallbizsmartswitches</a>
Cisco Small Business Managed Switches	<a href="http://www.cisco.com/go/smallbizmanagedswitches">www.cisco.com/go/smallbizmanagedswitches</a>
Cisco Small Business Unmanaged Switches	<a href="http://www.cisco.com/go/smallbizunmanagedswitches">www.cisco.com/go/smallbizunmanagedswitches</a>
Regulatory, Compliance, and Safety Information	<a href="http://www.cisco.com/en/US/docs/switches/lan/csb_switching_general/rcsi/RCSI_Class_A_Switches.pdf">www.cisco.com/en/US/docs/switches/lan/csb_switching_general/rcsi/RCSI_Class_A_Switches.pdf</a>
Cisco Small Business	
Cisco Partner Central for Small Business (Partner Login Required)	<a href="http://www.cisco.com/web/partners/sell/smb">www.cisco.com/web/partners/sell/smb</a>
Cisco Small Business Home	<a href="http://www.cisco.com/smb">www.cisco.com/smb</a>

## Americas Headquarters

Cisco Systems, Inc.  
170 West Tasman Drive  
San Jose, CA 95134-1706  
USA

[www.cisco.com](http://www.cisco.com)

Small Business Support, Global: [www.cisco.com/go/sbsc](http://www.cisco.com/go/sbsc)



78-18990-02

Cisco and the Cisco logo are trademarks or registered trademarks of Cisco and/or its affiliates in the U.S. and other countries. To view a list of Cisco trademarks, go to this URL: [www.cisco.com/go/trademarks](http://www.cisco.com/go/trademarks). Third-party trademarks mentioned are the property of their respective owners. The use of the word partner does not imply a partnership relationship between Cisco and any other company. (1110R)

© 2011 Cisco Systems, Inc. All rights reserved.