






IGW500-500/1000/1500 Series

Internet Gateway Datasheet

Overview

IGW500-500/1000/1500 series is new-generation internet gateway developed by Maipu Communication. It has powerful functions which integrated Routing, Switching, Access Controller, Security, IPSec VPN and Authentication features in one box, and supports docking with MMC cloud management platform to realize central operation and monitoring. It well meets the comprehensive SMB customer requirements such as branch office, hotel, restaurant, school, chain store, etc.

IGW500-500/1000/1500 series internet gateway can centrally manage FIT AP and STA client, providing rich type of wired and wireless services. The new-generation IGW500-500/1000/1500 has the advantages of high-performance, rich features integration, high reliability and security to meet the needs of different kind of wireless network scenarios. It adopts friendly GUI management interfaces which makes the configuration and deployment easily.

Model Name	Specification
 IGW500-500	<ul style="list-style-type: none">● 8*10/100/1000M Base-T● 2*1G SFP● Fixed one AC Power● RJ45 Console Port/USB2.0 Port● Max AP Management: 128
 IGW500-1000	<ul style="list-style-type: none">● 8*10/100/1000M Base-T● 2*1G SFP● Fixed one AC Power● RJ45 Console Port/USB2.0 Port● Max AP Management: 256
 IGW500-1500	<ul style="list-style-type: none">● 8*10/100/1000M Base-T● 2*1G SFP● Fixed one AC Power● RJ45 Console Port/USB2.0 Port● Max AP Management: 512

Key Features

All-in-one integrated gateway, helping customers save investment

It integrates the functions of router, PoE switch, AC wireless controller, behavior management, basic firewall and local authentication. Multiple devices are integrated into one device, greatly reducing the workload of operation and maintenance, realizing rapid fault location and simplifying the difficulty of management. One device can create a set of solutions and reduce the investment cost.

Wireless user authentication

The built-in web portal service provides local authentication services and can quickly and easily build security wireless network. It can also be connected to an external portal server to easily realize a variety of authentication types including Portal, PSK, WPA3, 802.1X and OPEN methods.

Friendly web configuration wizard, which can be learned in only few minutes

It provides a highly user-friendly web configuration interface and configuration wizard to help network administrators complete the device configuration and maintenance with the highest efficiency, which can be easily done with a little work.

Intelligent AP management technology, AP zero configuration, plug and play

In the fit AP application mode, the zero-configuration fit AP can be found and automatically connected to the converged internet gateway through the L2/L3 network. The converged gateway can configure, operate and manage the fit AP. It supports rich L2/L3 functions, and forms the management and monitoring of fit AP through the networks.

Intelligent auto roaming technology does not require terminal re-authentication

When wireless users roam in the network, through the sharing of users' IP, authentication, authorization and other information, users can span the whole wireless network, effectively ensure users' mobility and security, keep the status of IP, authentication and authorization unchanged, and users can enjoy fast data 802.11K/V/R fast roaming services.

Smooth network upgrade, protecting user investment

It has extremely high MAC address capacity and hardware routing table capacity which can fully meet the networking requirements under various complex network environments. It can be deployed with gateway mode or bypass mode, users can realize seamless, safe and fast wireless network deployment on any existing L2 and L3 network without interrupting the operation of the current network, making the network easy to upgrade smoothly and taking into account the early investment.

Intelligent configuration management, reducing user maintenance and management

Based on the advanced intelligent management and control concept, it can provide auto software upgrade and auto configuration distribution for its controlled APs, and support managing the converged gateway remotely via the cloud management platform, which greatly reduces the cost and difficulty of device deployment and network maintenance.

Rich wireless functions, smooth transition to Wi-Fi6 network

The system provides more comprehensive wireless services: auto channel allocation, auto adjustment of AP transmission power, load flow balancing, fast roaming, pre authentication, etc. At the same time, users can flexibly configure QoS policies according to different applications to ensure the optimal operation of the network. The system supports the traditional AP access of 802.11a/b/g/n/ac/ax to provide users with higher bandwidth guarantee.

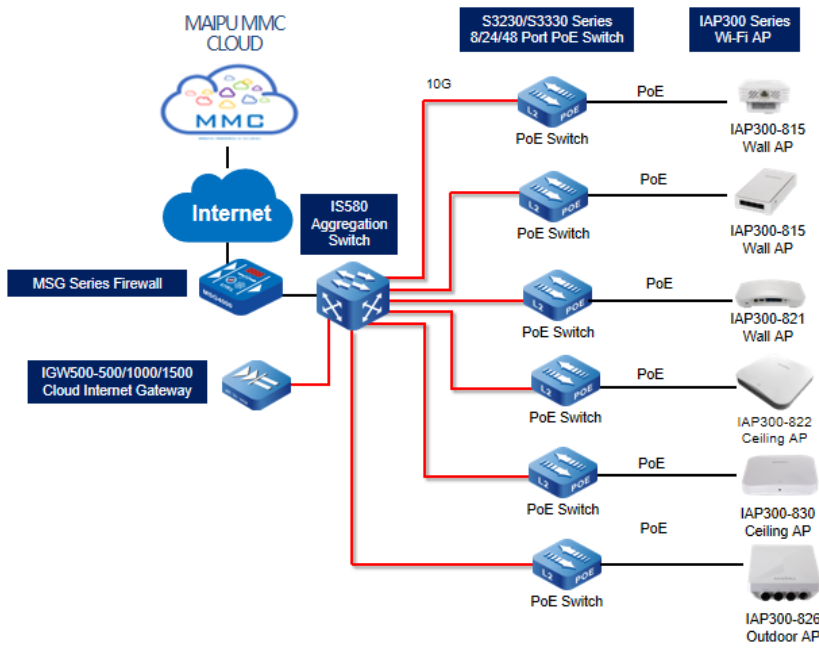
Technical Specifications

Model	IGW500-500	IGW500-1000	IGW500-1500
Version	V1	V2	V2
Hardware Specifications			
Flash	4G	8G	8G
Memory	1G	4G	4G
Performance (1500Byte)	1Gbps	1.2Gbps	1.5Gbps
Recommend Managed APs	Gateway mode: 64 Units	Gateway mode: 96 Units	Gateway mode: 128 Units
	Controller mode: 128 Units	Controller mode: 256 Units	Controller mode: 512 Units
Physical Ports	8*1000M RJ45 + 2*1000M SFP		
Management Interfaces	One console port, One USD2.0 port		
Power Supply	Fixed One AC Power, Input Voltage (AC): 100-240V, 50-60Hz		
Dimension(W×D×H)	440×330×44.2mm(1U)		
Power Lightning Protection	6KV for both common mode and differential mode are 6kV		
Temperature	Work temperature: 0-45°C		
	Storage temperature: -40–70°C		
Humidity	Work humidity: 5-85%, no-condensing		
	Storage humidity: 5-95%, non-condensing		
Software Specification			
Gateway Settings	Dynamic IP, Static IP And PPPoE, Multiple WAN, VLAN, Static NAT, Dynamic NAT, Port Mapping, IPV4/IPV6 DHCP Server, DNS, IPSec VPN, Link Detection, PBR		
Wireless Features	CAPWAP, High Availability, AP Upgrading, Manual and Regular AP Restarting, Limit Numbers of Access Clients, Restore AP, AP Status Monitoring, STA Status Monitoring, Load Balancing Between RF(2.4G & 5G), Load Balancing Between Wireless Clients, Manually/Automatically Work Channel Setting, Manually/Automatically Transmission Power Setting, Manually 20/40/80/160mhz Channel Bandwidth Configuration, Manually/Automatically Channel Optimization, L2 Roaming, SSID Hidden, STA Isolation Within VLAN, RF Scheduled ON and OFF, STA Blacklist MAC & Whitelist MAC, Bandwidth Limitation Based On AP Group, Bandwidth Limitation Based On Service Name, Downlink/Uplink Bandwidth Control, AP Escape, Flood Attack Detection, Fast Roaming(802.11K/V/R), Scan & Anti-rogue, STA IPv4/IPv6 Service, ARP Proxy Answer		
Authentication Management	Open, PSK, 802.1X, Local Portal (Online Terminals, Effective Online Duration, Local Password-free Authentication, Customize Web Authentication Page/Built-In Authentication Page Template, Free Access Resources), External Portal, WPA-Personal, WPA-Enterprise, WPA2-Personal, WPA2-Enterprise, WPA3-Personal, WPA3-Enterprise		
Advanced Security Function	App Filtering, URL Filtering, Keyword Filtering, Mail Filtering, File Type Filtering, Behavior Record, Access Control, Connection Limitation, IP Access List, Time Rule List		
Attack Protection	Flood Attack, Single Packet Attack, Network Scan Attack, Sources Address Spoofing, Network Access Blacklist		
Device Management	Web, PING, Tracert, Packet Capture, Cloud, SNMP, NTP, Configuration Backup and Restore, Factory Reset		

Order Information

Model	Description
IGW500 Series Internet Gateway	
IGW500-1500	IGW500-1500 internet gateway, integrated Routing, Switching, Security, Access Controller, Authentication in one box, 8*1000M Base-T+2*1000M SFP interfaces, One AC Power Supply. (Gateway Mode: 128 Units AP; Controller Mode: 512 Units AP)
IGW500-1000	IGW500-1000 internet gateway, integrated Routing, Switching, Security, Access Controller, Authentication in one box, 8*1000M Base-T+2*1000M SFP interfaces, One AC Power Supply. (Gateway Mode: 96 Units AP; Controller Mode: 256 Units AP)
IGW500-500	IGW500-500 internet gateway, integrated Routing, Switching, Security, Access Controller, Authentication in one box, 8*1000M Base-T+2*1000M SFP interfaces, One AC Power Supply. (Gateway Mode: 64 Units AP; Controller Mode: 128 Units AP)

Scenario One: Medium-Sized Networking

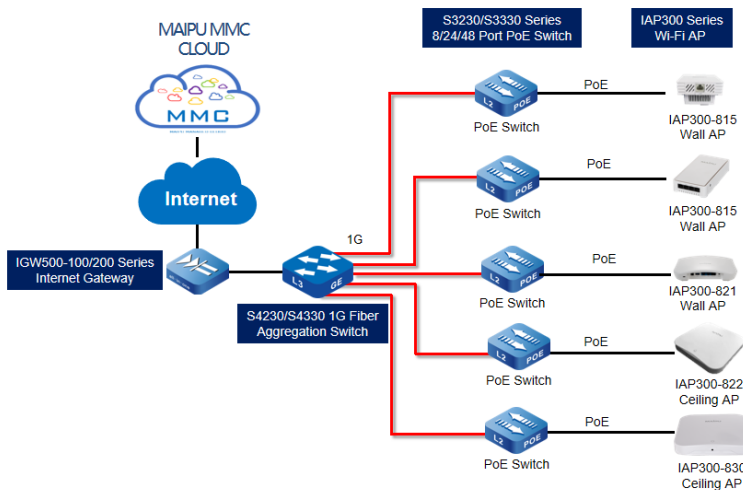


Highlight:

- 500+ User Scale Network
- 10G Bandwidth For Aggregation
- Unified Managed by Maipu MMC Cloud



Scenario Two: Branch Networking

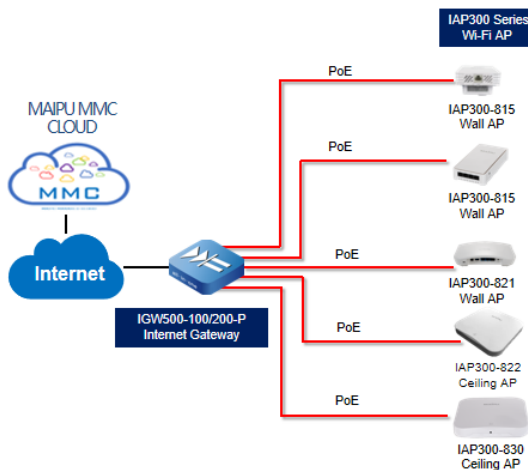


Highlight:

- 100+ User Scale Network
- 1G Bandwidth For Aggregation
- Unified Managed by Maipu MMC Cloud



Scenario Three: Small Office Networking



Highlight:

- 50+ User Scale Network
- Inbuilt PoE Interfaces for Saving Cost
- Unified Managed by Maipu MMC Cloud



MAIPU

MAKE IT INTELLIGENT

MAIPU

All rights reserved. Printed in the People's Republic of China.

No part of this document may be reproduced, transmitted, transcribed, stored in a retrieval system, or translated into any language or computer language, in any form or by any means, electronic, mechanical, magnetic, optical, chemical, manual or otherwise without the prior written consent of Maipu Communication Technology Co., Ltd.

Maipu makes no representations or warranties with respect to this document contents and specifically disclaims any implied warranties of merchantability or fitness for any specific purpose. Further, Maipu reserves the right to revise this document and to make changes from time to time in its content without being obligated to notify any person of such revisions or changes.

All other products or services mentioned herein may be registered trademarks, trademarks, or service marks of their respective manufacturers, companies, or organizations.