

MAIPU

SWITCH PRODUCT LINE 2021

Maipu Communication Technology Co., Ltd.

迈普大厦

AGENDA

CONTENTS

CHAPTER 1

2021 MAIPU ENTERPRISE SWITCH PRODUCT LINE

CHAPTER 2

2021 MAIPU DATACENTER SWITCH PRODUCT LINE

CHAPTER 3

2021 MAIPU SWITCH SOLUTION INTRODUCTION

CHAPTER 4

2021 MAIPU SWITCH BRIEF COMPARISON

第三章



MAIPU ENTERPRISE SWITCH PRODUCT LINE

S8900E MPLS Core Series

- Large Campus Core
- Static/RIP/OSPF/BGP Routing
- MPLS L3 VPN
- Full Modular Design



S8900E-10

S8900E-10

- Full Redundant Design
- 10 Service Slots
- Distribution architecture
- Stackable



S8900E-06

S8900E-06

- Full Redundant Design
- 6 Service Slots
- Distribution architecture
- Stackable

S6600A Distribution Series

- Medium Campus Distribution
- Static/RIP/OSPF/BGP Routing
- Full Modular Design



S6600A-06

S6600A-06

- Full Redundant Design
- 4 Service Slots
- Distribution architecture
- Stackable



S6600A-04

S6600A-04

- Full Redundant Design
- 4 Service Slots
- Stackable

IS580 Aggregation Series

- Small Campus Aggregation
- Static/RIP/OSPF/BGP Routing
- Modular Dual Power Supply



IS580-48XF

IS580-48X

- 48*10G SFP+
- Dual Power Slots
- Stackable



IS580-26XF

IS580-26XF

- 24*10G SFP+
- 2*40G QSFP
- Dual Power Slots
- Stackable

S4330 10G L3 Series

- L3 Gigabit Aggregation
- Static/RIP/OSPF/BGP Routing
- Modular Dual Power Supply



S4330-54GXF

S4330-54TXF

S4330-54TXP

S4330-54TGXF

S4330 Series

- 48-Port 1G Base-T/Base-X
- Fixed 4-Port 10G+ 1*Slot
- Dual Power Slots
- Stackable



S4330-30TXF

S4330-30TXP

S4330 Series

- 24-Port 1G Base-T
- Fixed 4-Port 10G+ 1*Slot
- Dual Power Slots
- Stackable



S4230 10G L3 Series

- L3 Gigabit Aggregation
- Static/RIP/OSPF/BGP Routing
- Fixed Dual Power Supply



S4230-30TXF-AC

S4230-54TXF-AC

S4230 Series

- 24/48-Port 1G Base-T
- Fixed 6-Port 10G
- Fixed Dual AC Power
- Stackable



S4230-36GTXF-AC

S4230-36GTXF-DC48

S4230 Series

- 24-Port 1G Base-X + 8-Port 1G Base-T
- Fixed 4-Port 10G
- Fixed AC/DC Power
- Stackable

S3330 10G L3 Lite Series

- L3 Lite Gigabit Access
- Static/RIP/OSPF Routing
- Fixed Dual Power Supply



S3330-28TXF-AC

S3330-28TXP-AC

S3330 Series

- 24-Port 1G Base-T/Base-X
- Fixed 4-Port 10G
- Fixed Dual AC Power
- Stackable



S3330-28GXF-AC

S3330-28GXF-DC48

S3330 Series

- 24-Port 1G Base-X
- Fixed 4-Port 10G
- Fixed AC/DC Power
- Stackable

S3230 10G L3 Lite Series

- L3 Lite Gigabit Access
- Static Routing
- Fixed Single Power Supply



S3230-28TXF-AC

S3230-28TXP-AC

S3230 Series

- 24-Port 1G Base-T
- Fixed 4-Port 10G
- Fixed One AC Power
- Stackable



S3230-54TXP-AC

S3230 Series

- 48-Port 1G Base-T
- Fixed 4-Port 10G
- Fixed One AC Power
- Stackable



MAIPU S8900E-06/10 ENTERPRISE CORE SWITCH

Typical Scenario

Large Campus Network
Core Switch



Specification	S8900E-06/10 Series
Switching Capacity (Tbps)	S8900E-06: 3.84Tbps S8900E-10: 6.4Tbps
Switching Fabric Slots (SFU)	2
Control Engine Slots (MPU)	2
Line Processor Units(LPU)	6/10
Power Module Slots	4
Fan Array Slot	2
Dimensions (W x D x H)	441mmx434mmx488mm(11U) 441mmx434mmx666mm(15U)

Hardware Architecture

- Hot swapping of all modules
- Dual Control Engines
- Dual Switching Fabric
- Modular Power&Fan Slots

High-Density Interface

- Maximum 448*10G SFP+ Ports(S8900E-10)
- Maximum 128*40G QSFP Ports(S8900E-10)
- Maximum 40*100G QSFP28 Ports(S8900E-10)

Rich L2/L3 Feature

- L2 VPLS VPN, L3 MPLS VPN
- Static/RIP/OSPF/BGP/ISIS Routing Protocol
- L2&L3 Multicast Features

Virtualization

- VST, H-VST Stacking
- MLAG

SDN Ready

- SDN Controller Management
- Zero Touch Provision(ZTP)

MAIPU S6600A-04/06 ENTERPRISE DISTRIBUTION SWITCH

Typical Scenario

Small/Medium Campus Network
Distribution Switch



Specification	S6600A-06	S6600A-04
Switching Capacity (Gbps)	≥2Tbps	≥1Tbps
Control Engine Slots (MPU)	2	2
Switching Fabric Slots (SFU)	2	N/A
Line Processor Units(LPU)	4	4
Power Module Slots	4	2
Fan Array Slots	2	1

Hardware Architecture

- Hot swapping of all modules
- Dual Control Engines
- Dual Switching Fabric
- Modular Power&Fan Slots

High-Density Interface

- Maximum 192*1G RJ45 Ports (S6600A-06)
- Maximum 192*1G SFP Ports (S6600A-06)
- Maximum 128*10G SFP+ Ports (S6600A-06)
- Maximum 32*40G QSFP Ports (S6600A-06)

Rich L2/L3 Feature

- Static/RIP/OSPF/BGP/ISIS Routing Protocol
- L2&L3 Multicast Features

Virtualization

- VST, H-VST Stacking
- MLAG

SDN Ready

- SDN Controller Management
- Zero Touch Provision(ZTP)

MAIPU IS580 10G AGGREGATION SWITCH

Typical Scenario

Small Campus Network
10G Fiber Aggregation Switch



Specification	IS580-26XF	IS580-48XF
Switching Capacity (Gbps)	640Gbps	960Gbps
Fixed 10G SFP+	24	48
Fixed 40G QSFP	2	N/A
Power Module Slots	2	2
Power Supply	Dual AC Power Module	Dual AC Power Module
Dimensions (W x D x H)	440mmx420mmx44.2mm	440mmx420mmx44.2mm

High-Density Interface

- 24*10G SFP+, 2*40G QSFP Interfaces(IS580-26XF)
- 48*10G SFP+ Interfaces(IS580-48XF)
- Redundant Modular Power Supply

Rich L2/L3 Feature

- Static/RIP/OSPF/BGP/ISIS Routing Protocol
- L2&L3 Multicast Features
- G.8032, MSTP

Virtualization

- VST, H-VST Stacking
- MLAG

SDN Ready

- SDN Controller Management
- Zero Touch Provision(ZTP)

MAIPU S4330 GIGABIT L3 AGGREGATION SWITCH

Typical Scenario

Campus Network
Gigabit L3 Aggregation Switch



Model	S4330-30TXF	S4330-54TXF	S4330-30TXP	S4330-54TXP	S4330-54GXF	S4330-54TGXF
Fixed Interface	24*GET+4*10G SFP+	48*GET+4*10G SFP+	24*GET PoE+4*10G SFP+	48*GET PoE+4*10G SFP+	48*GE SFP + 4*10G SFP+	32*GET+16*GE SFP + 4*10G SFP+
PoE&PoE+	N/A	N/A	380W/760W	380W/760W	N/A	N/A
Expansion Slot	One 2*10G SFP+ expansion card					
Power Supply	Modular Dual DC/AC Power					

High-Density Interface

- 24/48*1G Interfaces, 4*10G SFP+ Interfaces, One Extension Slot
- Redundant Modular Power Supply

Rich L2/L3 Feature

- Static/RIP/OSPF/BGP/ISIS Routing Protocol
- L2&L3 Multicast Features
- G.8032, MSTP
- IPDD Smart PoE

Virtualization

- VST, H-VST Stacking
- MLAG

SDN Ready

- SDN Controller Management
- Zero Touch Provision(ZTP)

MAIPU S4230 GIGABIT L3 AGGREGATION SWITCH

Typical Scenario

Campus Network
Gigabit L3 Aggregation Switch



Model	S4230-30TXF-AC	S4230-54TXF-AC	S4230-36GTXF-AC/DC48
Fixed Interface	24*GET + 6*10G SFP+	48*GET + 6*10G SFP+	24*GE SFP + 8*GET + 4*10G SFP+
Power Supply	Fixed Dual AC Power	Fixed Dual AC Power	Fixed Dual AC Power Fixed One DC Power

High-Density Interface

- 24/48*1G Interfaces, 6*10G SFP+ Interfaces(30TXF/54TXF)
- Redundant Fixed Power Supply

Rich L2/L3 Feature

- Static/RIP/OSPF/BGP/ISIS Routing Protocol
- L2&L3 Multicast Features
- G.8032, MSTP

Virtualization

- VST, H-VST Stacking
- MLAG

SDN Ready

- SDN Controller Management
- Zero Touch Provision(ZTP)

MAIPU S3330 GIGABIT L3 LITE ACCESS SWITCH

Typical Scenario

Campus Network
Gigabit L3 Access Switch



Model	S3330-28TXF-AC	S3330-28TXP-AC	S3330-28GXF-AC/DC48	S3330-54TXF-AC	S3330-54TXP
Fixed Interface	24*GET+4*10G SFP+	24*GET PoE + 4*10G SFP+	24*GE SFP + 4*10G SFP+	48*GE RJ45 + 6*10G SFP+	48*GE RJ45 PoE+4*10G SFP+ and One Expansion Slot
PoE&PoE+	N/A	380W	N/A	N/A	380W/760W
Power Supply	Fixed Dual AC Power	Fixed Dual AC Power	Fixed Dual AC Power; Fixed One DC Power	Fixed Dual AC Power	Dual Modular Power Slots

High-Density Interface

- 24/48*1G Interfaces, 4*10G SFP+ Interfaces
- Redundant Fixed Power Supply

Rich L2/L3 Feature

- Static/RIP/OSPF Routing Protocol
- L2 Multicast Features
- G.8032, MSTP
- IPDD Smart PoE

Virtualization

- VST, H-VST Stacking
- MLAG

SDN Ready

- SDN Controller Management
- Zero Touch Provision(ZTP)

MAIPU S3230 GIGABIT L3 LITE ACCESS SWITCH

Typical Scenario

Campus Network
Gigabit L3 Access Switch



Model	S3230-28TXF-AC	S3230-28TXP-AC	S3230-54TXP-AC
Fixed Interface	24*GET+4*10G SFP+	24*GET POE+4*10G SFP+	48*GET POE+4*10G SFP+, One Expansion Slot
PoE&PoE+	N/A	380W	760W
Power Supply	Fixed Single Power		

High-Density Interface

- 24/48*1G Interfaces, 4*10G SFP+ Interfaces
- Fixed Single Power Supply

Rich L2/L3 Feature

- Static Routing Protocol
- L2 Multicast Features
- G.8032, MSTP
- IPDD Smart PoE

Virtualization

- VST, H-VST Stacking
- MLAG

SDN Ready

- SDN Controller Management
- Zero Touch Provision(ZTP)

AGENDA

CONTENTS

CHAPTER 1

2021 MAIPU ENTERPRISE SWITCH PRODUCT LINE

CHAPTER 2

2021 MAIPU DATACENTER SWITCH PRODUCT LINE

CHAPTER 3

2021 MAIPU SWITCH SOLUTION INTRODUCTION

CHAPTER 4

2021 MAIPU SWITCH BRIEF COMPARISON

第三章



MAIPU DATACENTER SWITCH PRODUCT LINE

S12800 400G DC Core Switch

- Crossbar architecture
- Data Center VxLAN Spine Node
- Static/RIP/OSPF/BGP Routing
- VST/H-VST/M-LAG



S12800-08

S12800-08

- Full Redundant Design
- 8 Service Slots
- 6 Switching Fabric
- Crossbar architecture
- Stackable

S8900E 100G DC Core Switch

- Crossbar architecture
- Data Center VxLAN Spine Node
- Static/RIP/OSPF/BGP Routing
- VST/H-VST/M-LAG



S8900E-12

S8900E-12

- Full Redundant Design
- 12 Service Slots
- 4 Switching Fabric
- Crossbar architecture
- Stackable



S8900E-08

S8900E-08

- Full Redundant Design
- 8 Service Slots
- 4 Switching Fabric
- Crossbar architecture
- Stackable

S5930 25/100G DC ToR Switch

- Data Center VxLAN 100G Leaf Node
- Static/RIP/OSPF/BGP Routing
- VST/H-VST/M-LAG



S5930-32QFP

Full 100G TOR Switch

- 32*100G QSFP26
- Modular Fan Slots
- Modular Power Slots



S5930-56SQFP

25G+100G TOR Switch

- 48*25G SFP26
- 8*100G QSFP28
- Modular Power Slots
- Modular Fan Slots

S5830 10G DC ToR Switch

- Data Center VxLAN 10G Leaf Node
- Static/RIP/OSPF/BGP Routing
- VST/H-VST/M-LAG



S5830-56XQFP

10G+100G TOR Switch

- 48*10G SFP+
- 8*100G QSFP28
- Modular Power Slots
- Modular Fan Slots



S5830-56XTQFP

10G+100G TOR Switch

- 48*10G Base-T
- 6*100G QSFP28
- Modular Power Slots
- Modular Fan Slots

S5820 10G DC ToR Switch

- Data Center VxLAN 10G Leaf Node
- Static/RIP/OSPF/BGP Routing
- VST/H-VST/M-LAG



S5820-30XQFP

10G+40G+100G TOR Switch

- 24*10G SFP+
- 2*40G QSFP+4*100G QSFP28
- Modular Power Slots
- Modular Fan Slots



S5820-54XQFP

10G+40G+100G TOR Switch

- 48*10G SFP+
- 2*40G QSFP+4*100G QSFP28
- Modular Power Slots
- Modular Fan Slots

S5810 1G DC ToR Switch

- Data Center VxLAN 1G Leaf Node
- Static/RIP/OSPF/BGP Routing
- VST/H-VST/M-LAG



NSS5810-56TXP

1G+10G+25G TOR Switch

- 24*1G Base-T+18*10G
- 8*25G SFP28
- Modular Power Slots
- Modular Fan Slots





MAIPU S12800-08 400G DATACENTER CORE SWITCH

Typical Scenario

Datcenter VxLAN Spine Core Switch

2022 Q1



Specification	S12800-08
Switching Capacity (Tbps)	57.6Tbps
Switching Fabric Slots (SFU)	4+2
Control Engine Slots (MPU)	2
Line Processor Units(LPU)	8
Power Module Slots	8
Fan Array Slot	4
Dimensions (W x D x H)	484mmx745mmx841mm(19U)

Hardware Architecture

- Crossbar architecture
- Hot swapping of all modules
- Dual Control Engines
- Max. Four Switching Fabric

High-Density Interface

- Maximum 384*10G SFP+ Ports
- Maximum 288*100G QSFP28 Ports
- 400G Ports Upgradable

Rich L2/L3 Feature

- L2 VPLS VPN, L3 MPLS VPN
- Static RIP OSPF BGP ISIS
- L2&L3 Multicast Features

Datacenter Features

- VxLAN, EVPN
- VST, H-VST, M-LAG Stacking
- Hot Patch, ISSU

SDN Ready

- SDN Controller Management
- Zero Touch Provision(ZTP)

MAIPU S8900E-08/12 100G DATACENTER CORE SWITCH

Typical Scenario

Datacenter VxLAN Spine
Core Switch



Specification	S8900E-08/12 Series
Switching Capacity (Tbps)	S8900E-08: 9.6Tbps S8900E-12: 14.4Tbps
Switching Fabric Slots (SFU)	4
Control Engine Slots (MPU)	2
Line Processor Units(LPU)	8/12
Power Module Slots	8
Fan Array Slot	4
Dimensions (W x D x H)	442mmx645mmx666mm(15U) 484mmx745mmx841mm(19U)

Hardware Architecture

- Crossbar architecture
- Hot swapping of all modules
- Dual Control Engines
- Max. Four Switching Fabric

High-Density Interface

- Maximum 624*10G SFP+ Ports
- Maximum 192*40G QSFP Ports
- Maximum 48*100G QSFP28 interface

Rich L2/L3 Feature

- L2 VPLS VPN, L3 MPLS VPN
- Static RIP OSPF BGP ISIS
- L2&L3 Multicast Features

Datacenter Features

- VxLAN, EVPN
- VST, H-VST, M-LAG Stacking
- Hot Patch, ISSU

SDN Ready

- SDN Controller Management
- Zero Touch Provision(ZTP)

MAIPU S5930 DATA CENTER FULL 100G TOR SWITCH

Typical Scenario

Enterprise Datacenter
100G VxLAN Leaf Switch

2022
Q1



Specification	S5930-32QFP
Switching Capacity (Gbps)	6.4Tbps
Fixed 100G QSFP28	32
Power Module Slots	2
Fan Module Slots	4

Hardware Architecture

- Hot swapping of Fan Modules
- Hot swapping of Power Modules

High-Density Interface

- Maximum 32*100G QSFP28 Ports

Rich L2/L3 Feature

- Static RIP OSPF BGP ISIS
- L2&L3 Multicast Features

Datacenter Features

- VxLAN, EVPN
- VST, H-VST, M-LAG Stacking
- Hot Patch

SDN Ready

- SDN Controller Management
- Zero Touch Provision(ZTP)

MAIPU S5930 DATA CENTER 25G+100G TOR SWITCH

Typical Scenario

Enterprise Datacenter
25G VxLAN Leaf Switch

2022
Q1



Specification	S5930-56SQFP
Switching Capacity (Gbps)	4Tbps
Fixed 25G SFP28	48
Fixed 100G QSFP28	8
Power Module Slots	2
Fan Module Slots	4

Hardware Architecture

- Hot swapping of Fan Modules
- Hot swapping of Power Modules

High-Density Interface

- Maximum 48*25G SFP28 Ports
- Maximum 8*100G QSFP28 Ports

Rich L2/L3 Feature

- Static RIP OSPF BGP ISIS
- L2&L3 Multicast Features

Datacenter Features

- VxLAN, EVPN
- VST, H-VST, M-LAG Stacking
- Hot Patch

SDN Ready

- SDN Controller Management
- Zero Touch Provision(ZTP)

MAIPU S5830 DATA CENTER 10G+100G TOR SWITCH

Typical Scenario

Enterprise Datacenter
10G VxLAN Leaf Switch

2022
Q1



Specification	S5830-56XQFP	S5830-54XTQFP
Switching Capacity (Gbps)	2.56Tbps	2.16Tbps
Fixed 10G SFP+	48	N/A
Fixed 10G Base-T	N/A	48
Fixed 100G QSFP28	8	6
Power Module Slots	2	2
Fan Module Slots	4	4

Hardware Architecture

- Hot swapping of Fan Modules
- Hot swapping of Power Modules

High-Density Interface

- 48*10G SFP+, 8*100G QSFP28 Ports(S5830-56XQFP)
- 48*10G Base-T, 6*100G QSFP28 Ports(S5830-54XTQFP)

Rich L2/L3 Feature

- Static RIP OSPF BGP ISIS
- L2&L3 Multicast Features

Datacenter Features

- VxLAN, EVPN
- VST, H-VST, M-LAG Stacking
- Hot Patch

SDN Ready

- SDN Controller Management
- Zero Touch Provision(ZTP)

MAIPU S5820 DATACENTER 10G+40G+100G TOR SWITCH

Typical Scenario

Enterprise Datacenter
10G VxLAN Leaf Switch



Specification	S5820-54XQFP	S5820-30XQFP
Switching Capacity (Gbps)	1.92Tbps	1.44Tbps
Fixed 10G SFP+	48	24
Fixed 40G QSFP	2	2
Fixed 100G QSFP28	4	4
Power Fan Slots	2	2
Power Module Slots	2	2

Hardware Architecture

- Hot swapping of Power Modules
- Hot swapping of Fan Modules

High-Density Interface

- 24*10G SFP+, 2*40G QSFP, 4*100G QSFP28 Interfaces(S5820-30XQFP)
- 48*10G SFP+, 2*40G QSFP, 4*100G QSFP28 Interfaces(S5820-54XQFP)

Rich L2/L3 Feature

- Static RIP OSPF BGP ISIS
- L2&L3 Multicast Features

Virtualization

- VxLAN, EVPN
- VST, H-VST, MLAG Stacking
- Hot Patch

SDN Ready

- SDN Controller Management
- Zero Touch Provision(ZTP)

MAIPU S5810 DATACENTER 1G+10G+25G TOR SWITCH

Typical Scenario

Enterprise Datacenter
1G VxLAN Leaf Switch



Specification	NSS5810-56TXP
Switching Capacity (Gbps)	1.84Tbps
Fixed 1G Base-T	24
Fixed 10G SFP+	18
Fixed 25G SFP28	8
Power Module Slots	2

Hardware Architecture

- Hot swapping of Power Modules
- Fixed Fan Modules

High-Density Interface

- Maximum 24*1G Base-T Ports
- Maximum 18*10G SFP+ Ports
- Maximum 8*25G SFP28 Ports

Rich L2/L3 Feature

- Static RIP OSPF BGP ISIS
- L2&L3 Multicast Features

Datacenter Features

- VxLAN, EVPN
- VST, H-VST, M-LAG Stacking
- Hot Patch

SDN Ready

- SDN Controller Management
- Zero Touch Provision(ZTP)

AGENDA

CONTENTS

CHAPTER 1

2021 MAIPU ENTERPRISE SWITCH PRODUCT LINE

CHAPTER 2

2021 MAIPU DATACENTER SWITCH PRODUCT LINE

CHAPTER 3

2021 MAIPU SWITCH SOLUTION INTRODUCTION

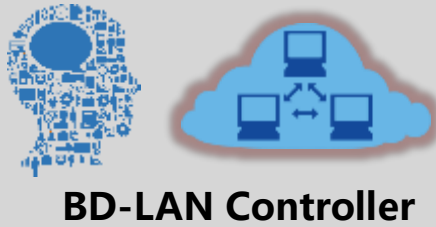
CHAPTER 4

2021 MAIPU SWITCH BRIEF COMPARISON

第三章

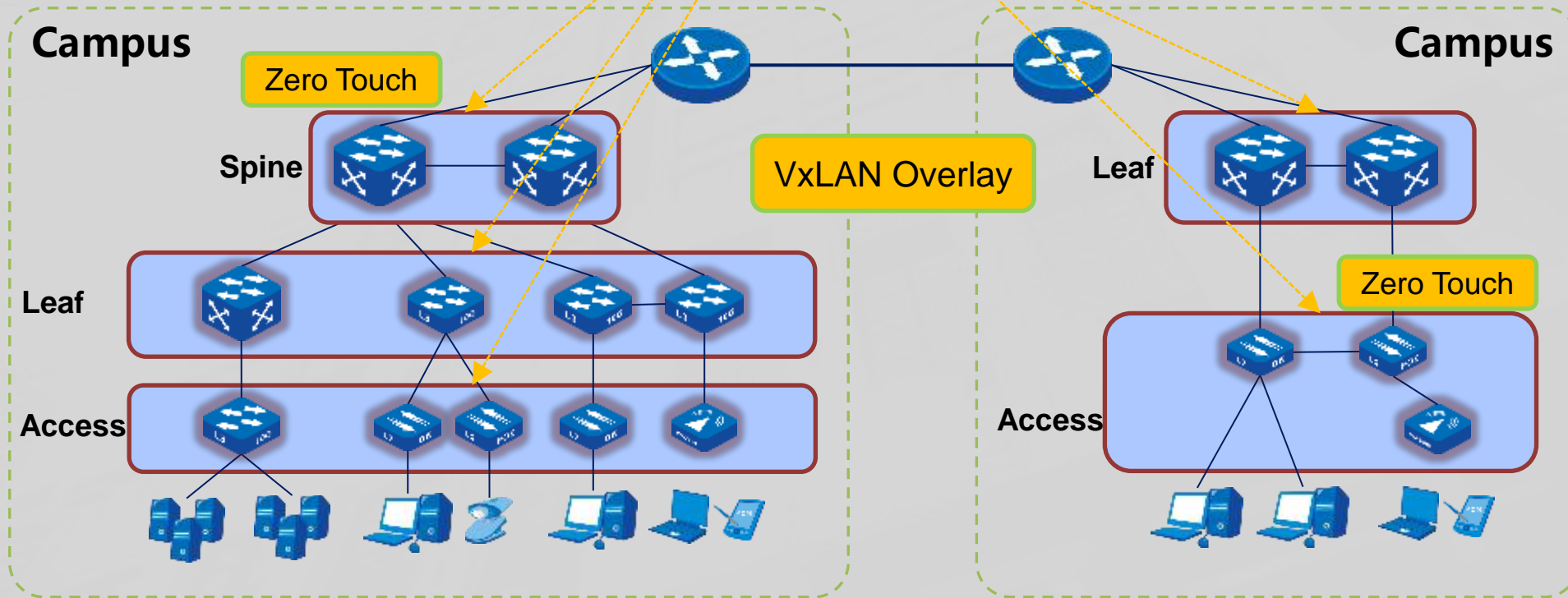


MAIPU ENTERPRISE SDN-CAMPUS SOLUTION

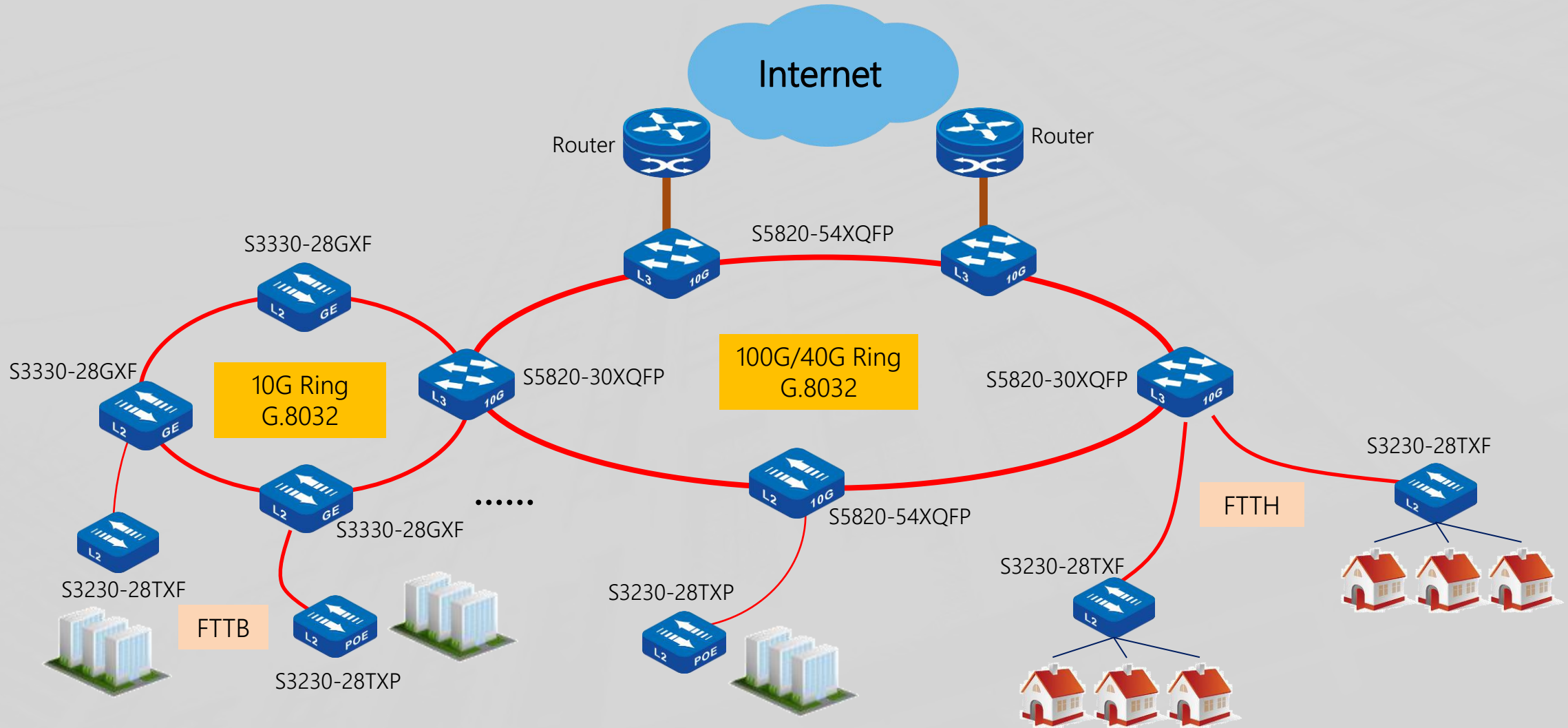


Orchestration

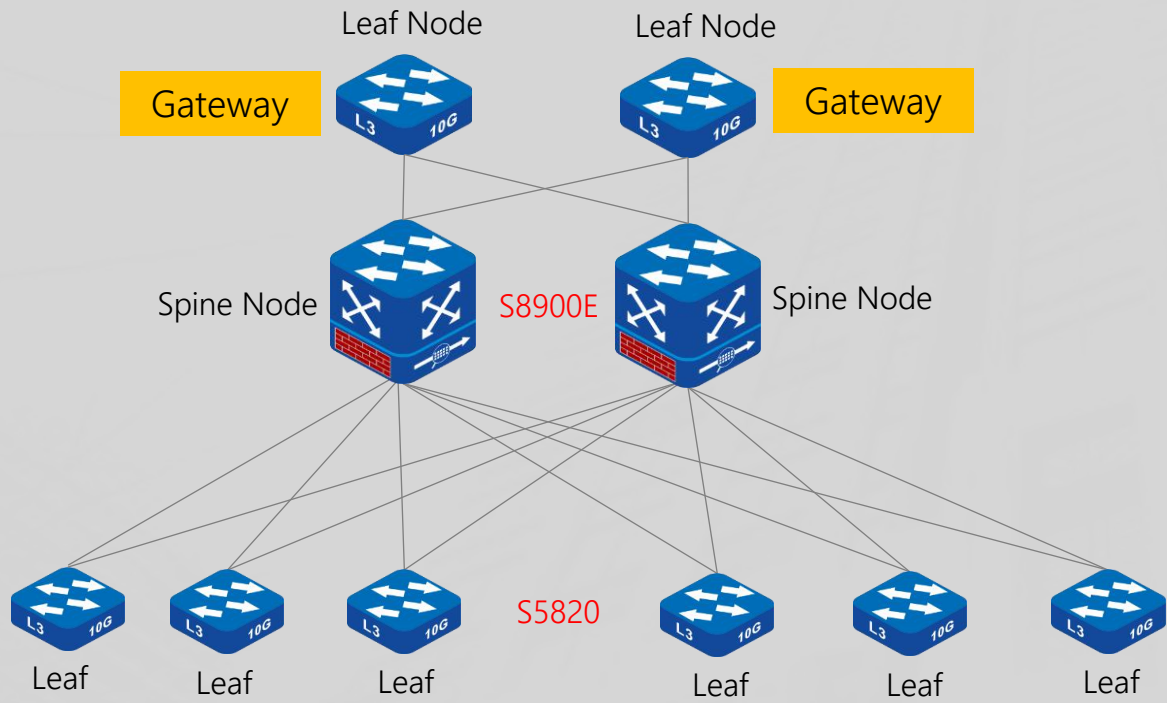
Visualization



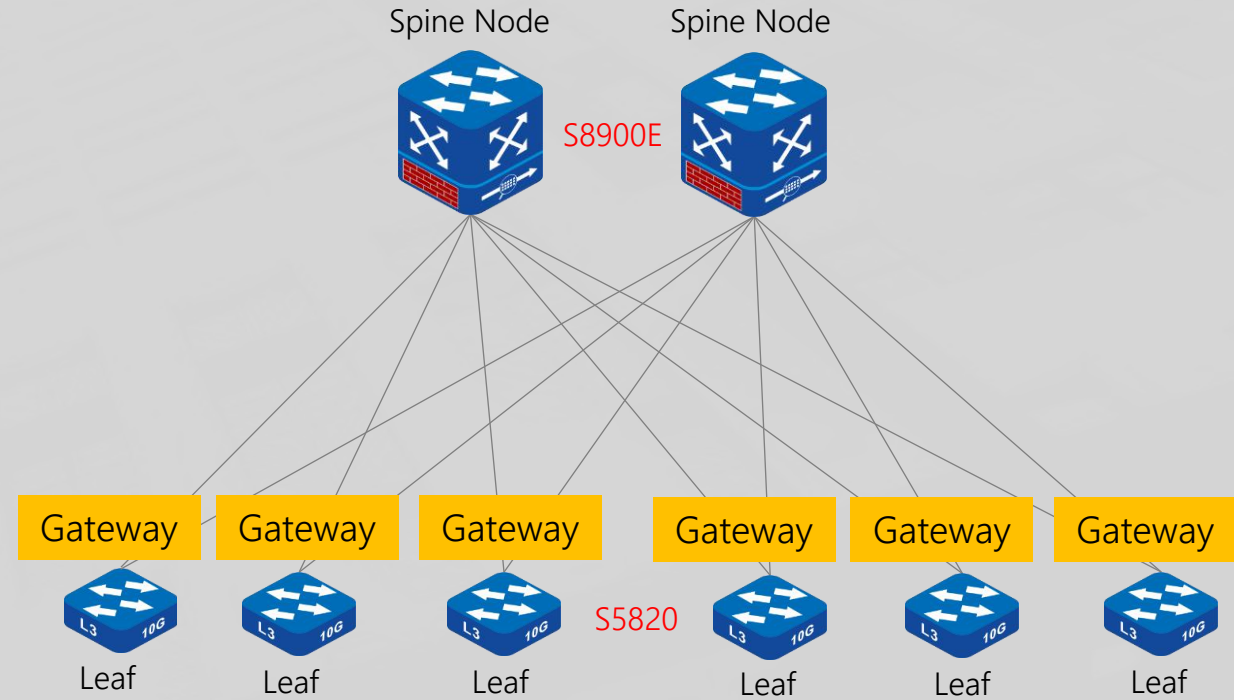
MAIPU ISP ETTH&ETTB SOLUTION



MAIPU ENTERPRISE DATACENTER VXLAN SOLUTION



Centralized VxLAN Gateway



Distribution VxLAN Gateway

AGENDA

CONTENTS

CHAPTER 1

2021 MAIPU ENTERPRISE SWITCH PRODUCT LINE

CHAPTER 2

2021 MAIPU DATACENTER SWITCH PRODUCT LINE

CHAPTER 3

2021 MAIPU SWITCH SOLUTION INTRODUCTION

CHAPTER 4

2021 MAIPU SWITCH BRIEF COMPARISON

第三章



MAIPU VS. CISCO

Maipu Enterprise Series



S8900E Series



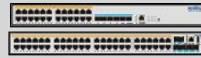
S6600A Series



IS580 Series



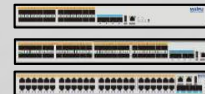
S4230 Series



S3230 Series



S5820 Series



S4330 Series



S3330 Series

Maipu Data Center Series



S12800 Series



S8900E Series



S5930 Series



S5830 Series



S5820 Series



S5810 Series

Cisco Enterprise Series



Catalyst 9600 Series



Catalyst 9400 Series

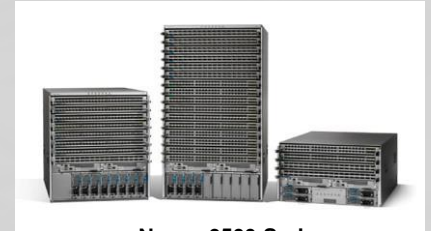


Catalyst 9200 Series



Catalyst 1000 Series

Cisco Data Center Series



Nexus 9500 Series



Nexus 9300 Series



MAIPU VS. HUAWEI

Maipu Enterprise Series



S8900E Series



S6600A Series



IS580 Series



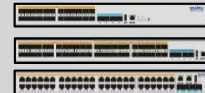
S4230 Series



S3230 Series



S5820 Series



S4330 Series



S3330 Series

Maipu Data Center Series



S12800 Series



S8900E Series



S5930 Series



S5830 Series



S5820 Series



S5810 Series

Huawei Enterprise Series



S12700 Series



S7700 Series



S6720 Series



S5720 Series



S5720S Series

Huawei Data Center Series



Cloud Engine 12800 Series



Cloud Engine 8800 Series



Cloud Engine 6800 Series



Cloud Engine 5800 Series



MAIPU VS. ARUBA

Maipu Enterprise Series



S8900E Series



S6600A Series



IS580 Series



S4230 Series



S3230 Series



S5820 Series



S4330 Series



S3330 Series

Maipu Data Center Series



S12800 Series



S8900E Series



S5930 Series



S5830 Series



S5820 Series



S5810 Series

Aruba Enterprise Series



CX 6400 Series



CX 6200 Series



CX 6100 Series



3810 Series



2930 Series

Aruba Data Center Series



CX 8400 Series



CX 8360 Series



CX 8325 Series



CX 6300 Series



THANKS

MAIPU, MAKE IT INTELLIGENT

迈普大厦

