

# CCR2116-12G-4S+

10G networking meets the unparalleled power of a modern ARM CPU.

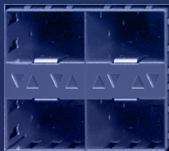
The most powerful CCR so far.



FORGET ABOUT CPU LIMITATIONS!

Massive BGP performance boost!

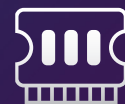
4x



10G SFP+



16-CORE, 2 GHZ ARM CPU



16 GB DDR4 RAM



M.2 PCIe SLOT



EXCEPTIONAL ENERGY EFFICIENCY:  
TYPICAL POWER CONSUMPTION –  
60W!

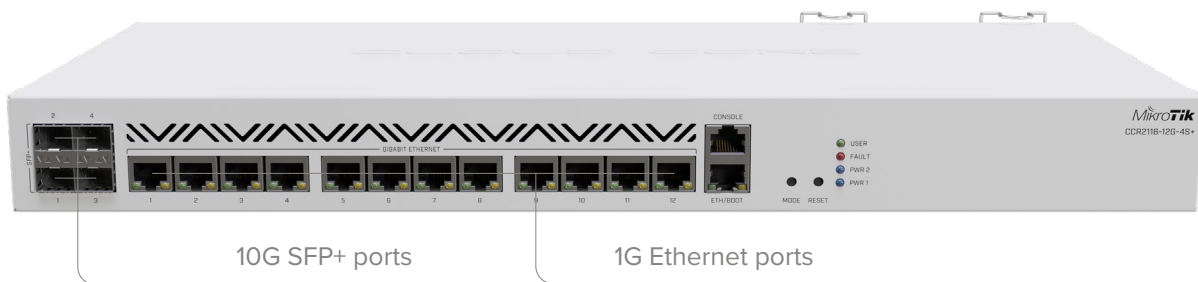


DUAL-REDUNDANT  
POWER SUPPLY

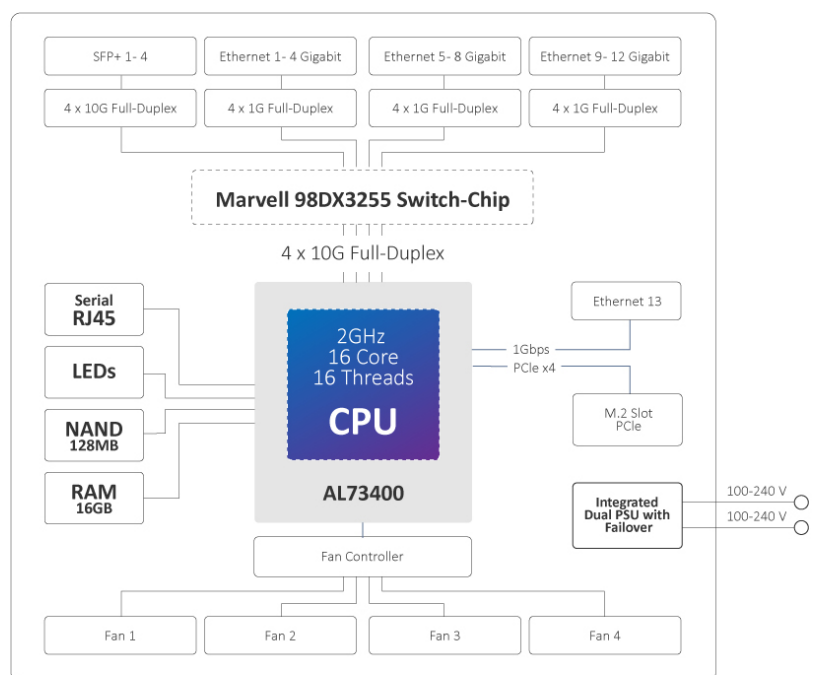
We wanted to see the full potential of the good, old, reliable 10G networking combined with a modern CPU. CCR2116-12G-4S+ allows you to forget about CPU limitations in your setup. Like its younger brother – the amazing CCR2004, this router features the mighty Amazon Annapurna Labs Alpine CPU.



But with 16 cores running at 2 GHz, this CCR eats the other one for breakfast. For example, we see at least a 15% increase in single-core performance. And that is the most important aspect when it comes to heavy operations based on per-connection processing. Like queues, for example. CCR2116-12G-4S+ sets a **new standard of single-core performance in the whole CCR product family!**

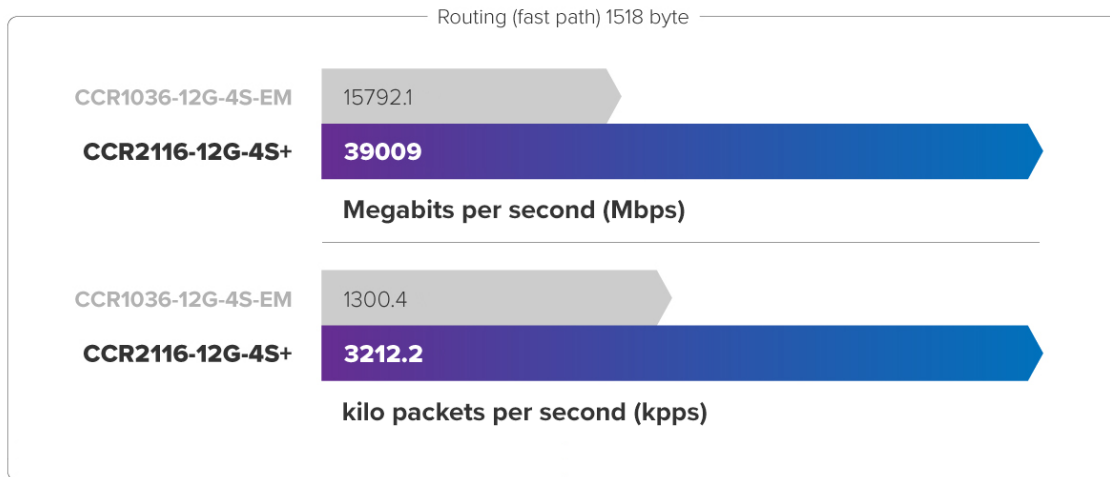


Obviously, you need the right connectivity to harness this power. There are **four 10G SFP+ ports**. They have a separate, full-duplex line connected to the Marvell Amethyst family switch chip. Then we have Gigabit Ethernet ports. 12 of them are running through the Marvel chip. And there is another Gigabit port connected directly to the CPU. For management purposes.



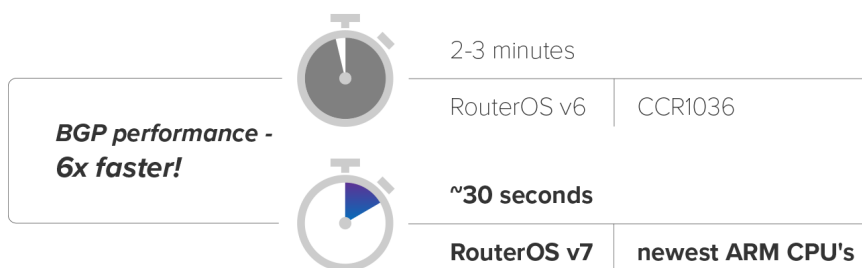
Each group of 4 ports has a separate full-duplex connection to the switch chip. No bottlenecks here. You can expect switch-like throughput in most setups.

The new generation of processors offers mind-blowing performance. If we look at the CCR1036 - the powerhouse with a 36 core CPU, the **new CCR2116 can easily double the performance. 16 cores vs 36 cores. Double the performance.**



*An average performance increase of 150%!*

There is also an M.2 PCIe slot. It supports SSD`s up to 8 terabytes. This could be extremely useful for all kinds of Container apps. But we are very excited to see what kinds of interesting use-cases you will come up with.



If you are a rather large ISP, dealing with dynamic routing, massive BGPs, complex firewall rules, and intricate quality of service configurations..This is the right device for you. Combination of raw power and utility with the reliable 10G networking. And yes, like with any ISP-level device, we've included a **dual-redundant power supply**. So you have one less thing to worry about.

CCR2116-12G-4S+: technology tested by time, built for the future.

## Specifications

Product code	CCR2116-12G-4S+
CPU	AL73400 2 GHz
CPU architecture	ARM 64bit
CPU core count	16
Size of RAM	16 GB
RAM type	DDR4
Storage	128 MB, NAND
Number of 1G Ethernet ports	13
Number of 10G SFP+ ports	4
Number of M.2 slots	1
Operating system	RouterOS (License level 6)
Switch chip model	98DX3255
Dimensions	443 x 199 x 44 mm
Operating temperature	-20°C to +60°C

## Powering

Number of AC inputs	2
AC input range	100-240 V
Power adapter nominal voltage	12 V
Power adapter nominal current	10.8 A
Max power consumption (without attachments)	60 W
Max power consumption	72 W

## Certification & Approvals

Certification	CE, FCC, IC
---------------	-------------

## Included parts



2 Power cords



Rackmount bracket white



Fastening set