

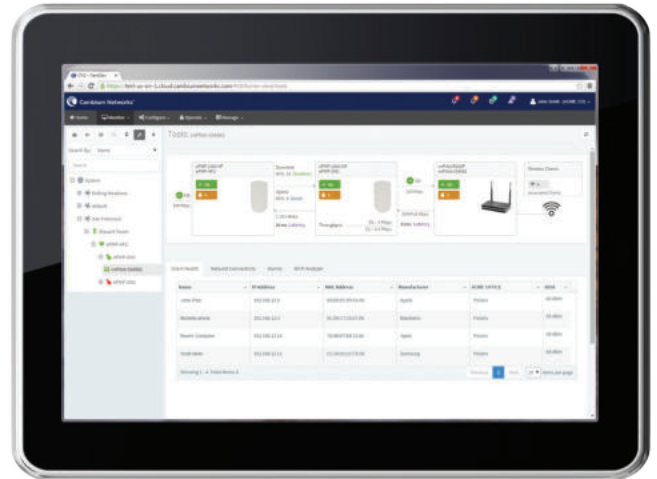
cnPilot™ Home & Business R200 and R201

SIMPLYING THE NETWORK.

Extending the service provider's indoor reach and streamlining components for a simplified indoor network. Versatile multi-function WLAN access points, offering remote visibility and end-to-end troubleshooting, extend the service provider's indoor reach.

Cloud Management: backed by Cambium's cnMaestro™ cloud manager offering end-to-end visibility of the network and customer devices.

- Out-of-the box zero touch onboarding
- Stateful alarms and dashboard views
- Multiple management options available including cloud-based, TR-069, SNMP and an enriched set of RESTful interfaces



Highly Integrated: the WLAN routers simplify the indoor home network-combing in one box commonly needed functions often put together from different manufacturers.

Connect up to

4

LAN Ports

2

Phone Ports

64

Wireless Devices

End-to-End Troubleshooting: Single dashboard view and rich statistics ensure rapid root cause detection and issue resolution

- One-click functionality reveals the health of all network nodes related to the problem area
- Troubleshoot end user client connectivity on any WLAN from a single console
- No truck roll required to debug wired or wireless connectivity configurations

Multiple SSIDs and Service Provider (community) SSID's: Enables service providers to offer SSIDs across their network as users travel from home, to outdoor public hotspot and to local business / small enterprise or campus. This allows network operators to promote their brand throughout their customers' daily journeys.



WLAN ROUTERS TO SUIT FUNCTIONS AND BUDGETS

	R200	R200P	R201	R201P	R201W
WLAN Routers	802.11n Single band 2.4 GHz	802.11n Single band 2.4 GHz	802.11ac Dual band 2.4 and 5 GHz	802.11ac Dual band 2.4 and 5 GHz	802.11ac Dual band 2.4 and 5 GHz
ATA - for Voice	✓	✓	✓	✓	
Cambium PoE out		✓		✓	✓

Specifications

FEATURES	R200	R200P	R201	R201P	R201W
KEY INTERFACES					
TELEPHONE INTERFACES 2 FXS ports, RJ11	✓	✓	✓	✓	
WAN	1 x 10/100 RJ45		1 x GigE, RJ45		
LAN	4 x 10/100BaseT, RJ45		4 x GigE, RJ45		
USB	1 USB 2.0 Host Port for shared printer or storage		1 USB 2.0 Host Port for shared printer or storage		
WiFi	2x2 Single band 11n 2.4 GHz		2x2 Dual band 11ac 2.4 (11n) and 5 GHz (11ac)		
SSIDs 4 Per Radio	4		8		
PoE OUTPUT Powering Cambium's PM 450 and ePMP Subscriber Module		✓		✓	✓
RESET BUTTON Factory reset button	✓	✓	✓	✓	✓
LED INDICATORS: Power	✓	✓	✓	✓	✓
WLAN	✓	✓	✓	✓	✓
LAN 1-4	✓	✓	✓	✓	✓
Phone 1-2	✓	✓	✓	✓	n/a

Specifications

FEATURES	R200	R200P	R201	R201P	R201W
Network					
PROTOCOL <i>DHCP/ PPPoE/ Static IP</i>	✓	✓	✓	✓	✓
<i>PPTP/L2TP VPN</i>	✓	✓	✓	✓	✓
<i>Dynamic DNS/DNS SRV (RFC 1706 and RFC 2782)</i>	✓	✓	✓	✓	✓
<i>DMZ</i>	✓	✓	✓	✓	✓
<i>NAT Traversal (Static NAT Route or by STUN)</i>	✓	✓	✓	✓	✓
<i>DHCP Client and DHCP server</i>	✓	✓	✓	✓	✓
<i>MAC address Clone</i>	✓	✓	✓	✓	✓
<i>IP Conflict Detection</i>	✓	✓	✓	✓	✓
ROUTE MODE <i>Route/Bridge, customer configurable</i>					
<i>Support IEEE 802.1Q VLAN/802.1p</i>	✓	✓	✓	✓	✓
<i>Layer 3 (DSCP) settings for SIP, RTP and Data</i>					
QUALITY OF SERVICE <i>Support IEEE 802.1Q VLAN/802.1p</i>	✓	✓	✓	✓	✓
<i>Layer 3 (DSCP) settings for SIP, RTP and Data</i>					
Wireless INTERFACES					
PROTOCOL	802.11 b/g/n		802.11 b/g/n/ac		
SECURITY <i>WEP, WPA-PSK (TKIP), WPA-PSK (AES), WPA2-PSK (TKIP), WPA2-PSK (AES), Mixed mode</i>	✓	✓	✓	✓	✓
OTHERS <i>AP isolation, MBSSID AP isolation, WMM, MAC Filter, WDS, WPS</i>	✓	✓	✓	✓	✓

Specifications

FEATURES	R200	R200P	R201	R201P	R201W
Call Features					
IP SIGNALING <i>SIP V2 (RFC3261/3262/ 3263/3264)</i>	✓	✓	✓	✓	
VOICE CODEC <i>G.711 (A-law, μ-law), G.722, G.723, G.729</i>	✓	✓	✓	✓	
FAX OVER IP <i>Real Time FAX over IP via T.38</i>	✓	✓	✓	✓	
<i>T.30 Fax with G.711</i>	✓	✓	✓	✓	
VOICE FEATURES <i>Adaptive jitter buffer management</i>	✓	✓	✓	✓	
<i>Voice Activity Detection</i>	✓	✓	✓	✓	
<i>Comfort Noise Generation</i>	✓	✓	✓	✓	
<i>Echo Cancellation</i>	✓	✓	✓	✓	
CALL FEATURES <i>3-way Conference</i>	✓	✓	✓	✓	
<i>Call hold, Call forwarding, Call transfer, Call waiting,</i>	✓	✓	✓	✓	
<i>Speed dial, Hotline, Dial plan</i>	✓	✓	✓	✓	
<i>Caller ID, Black list, Call log</i>	✓	✓	✓	✓	
NETWORK MANAGEMENT					
Integrated Management <i>cnMaestro Cloud Based Management for Configuration, Provisioning and daily Monitoring</i>	✓	✓	✓	✓	✓
CONFIGURATION <i>Web GUI interface</i>	✓	✓	✓	✓	✓
<i>Interactive Voice Response (IVR)</i>	✓	✓	✓	✓	✓
AUTO PROVISIONING <i>TFTP, HTTP</i>	✓	✓	✓	✓	✓
SNMP <i>SNMP v2</i>	✓	✓	✓	✓	✓
TIME <i>SNTP</i>	✓	✓	✓	✓	✓
ADMIN <i>Administrator and User</i>	✓	✓	✓	✓	✓

Specifications

FEATURES	R200	R200P	R201	R201P	R201W
NETWORK MANAGEMENT <i>(continued)</i>					
ALT MGMT <i>TR069</i>	✓	✓	✓	✓	✓
SYSLOG <i>Local, Remote</i>	✓	✓	✓	✓	✓
POWER SUPPLY					
AC/DC ADPATOR	AC INPUT: 100 -240V, 50-60 Hz DC OUTPUT: 12V, 2A		AC INPUT: 100 -240V, 50-60 Hz DC OUTPUT: 12V, 2A		AC INPUT: 100 -240V, 50-60 Hz DC OUTPUT: 12V, 3A
ENVIRONMENTAL					
OPERATION TEMP <i>+5°C to +45°C 5°C to +45°C</i>	✓	✓	✓	✓	✓
STORAGE TEMP <i>-25°C to +85°C</i>	✓	✓	✓	✓	✓
RELATIVE HUMIDITY <i>10%-90% No Condensing</i>	✓	✓	✓	✓	✓
Weight	0.75 kg		0.8 kg		
DIMENSION (H x W x D)	180 mm x 110 mm x 30 mm		175 mm x 155 mm x 35 mm		
REGULATORY					
EMC <i>FCC part 15B Class B, ETSI EN 301 489-1, ETSI EN 301 489-17, EN61000-6-1, EN61000-6-3, CE, RoHS</i>	✓	✓	✓	✓	✓
SAFETY <i>IEC 60950-1, UL 60950-1, EN 60950-1,</i>	✓	✓	✓	✓	✓