

SHOW MENU

SEE ALL WIRELESS LAN

MR86

Performance-driven Wi-Fi 6 for tough, high-density environments

Wi-Fi 6 performance and efficiency, with a dedicated security and Bluetooth radio



SPECIFICATIONS

Radios

- 2.4 GHz 802.11b/g/n/ax client access radio
- 5 GHz 802.11a/n/ac/ax client access radio
- 2.4 GHz & 5 GHz dual-band WIDS/WIPS, spectrum analysis, & location analytics radio
- 2.4 GHz Bluetooth Low Energy (BLE) radio with Beacon and scanning support
- Concurrent operations of all four radios

Supported frequency bands (country-specific restrictions apply):

- 2.412-2.484 GHz
- 5.150-5.250 GHz (UNII-1)
- 5.250-5.350 GHz (UNII-2)
- 5.470-5.600, 5.660-5.725 GHz (UNII-2e)
- 5.725 -5.825 GHz (UNII-3)

802.11ax, 802.11ac Wave 2, and 802.11n Capabilities

- UL/DL OFDMA, TWT support, BSS coloring
- 4 x 4 multiple input, multiple output (MIMO) with four spatial streams
- UL/DL SU-MIMO and MU-MIMO support
- Maximal ratio combining (MRC) & beamforming
- 20 and 40 MHz channels (802.11n); 20, 40, and 80 MHz channels (802.11ac Wave 2); 20, 40 and 80 MHz channels (802.11ax)

Security

- Integrated Layer 7 firewall with mobile device policy management
- Real-time WIDS/WIPS with alerting and automatic rogue AP containment with Air Marshal
- Flexible guest access with device isolation
- VLAN tagging (802.1q) and tunneling with IPsec VPN
- PCI compliance reporting
- WEP**, WPA, WPA2-PSK, WPA2-Enterprise with 802.1X, WPA3 - Personal**, WPA3 - Enterprise**, WPA3 - Enhanced Open (OWE)**
- EAP-TLS, EAP-TTLS, EAP-MSCHAPv2, EAP-SIM
- TKIP and AES encryption
- Enterprise Mobility Management (EMM) & Mobile Device Management (MDM) integration
- Cisco ISE integration for Guest access and BYOD Posturing

Quality of Service

- Advanced Power Save (U-APSD)
- WMM Access Categories with DSCP and 802.1p support
- Layer 7 application traffic identification and shaping

Mobility

- PMK, OKC, & 802.11r for fast Layer 2 roaming

Power

Power over Ethernet: 42.5 - 57 V (802.3at compatible)

Power consumption: 18 W max

Power over Ethernet injector sold separately

Mounting

Mounts to walls and vertical poles.

Mounting hardware included

Physical Security

Security screw included

Anti-tamper cable bay

Concealed mount plate

Environment

Operating temperature: -40 °F to 131 °F (-40 °C to 55 °C)

Humidity: 5 to 95% non-condensing

IP67 environmental rating

Physical Dimensions

11.81" x 6.02" x 2.16" (30.0 cm X 15.3 cm X 5.5 cm), not including cable gland, mounts or antennas

Weight: 52.91 oz (1.5 kg)

Interfaces

1x 100/1000/2.5G BASE-T Ethernet (RJ45)

Analytics

Embedded location analytics reporting and device tracking

Global L7 traffic analytics reporting per network, per device, & per application

Warranty

1 year hardware warranty with advanced replacement included

Ordering Information

MR86-HW Meraki MR86 Cloud Managed 802.11ax AP

MA-INJ-5-XX Meraki Multigigabit 802.3at Power over Ethernet Injector (XX = US/EU/UK/AU)

MA-ING-4-XX Meraki Gigabit 802.3at Power over Ethernet Injector (XX = US/EU/UK/AU)

MA-ANT-20 Meraki Dual-Band Omni Antennas

MA-ANT-21 Meraki 5GHz Sector Antennas

MA-ANT-23 Meraki 2.4GHz Sector Antennas

MA-ANT-25 Meraki Dual-Band Patch Antenna

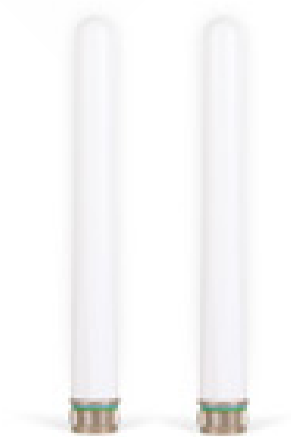
MA-ANT-27 Meraki Dual-Band Sector Antenna

AIR-ANT2513P4M-N Dual-band, 4-port, 30° beam

Meraki Dual-Band Omni Antennas

Note: Meraki access point license required. For AIR-ANT2513P4M-N= antenna, contact Cisco directly

Works With



Dual-Band Omni Antennas (4/7 dBi)

\$199.00

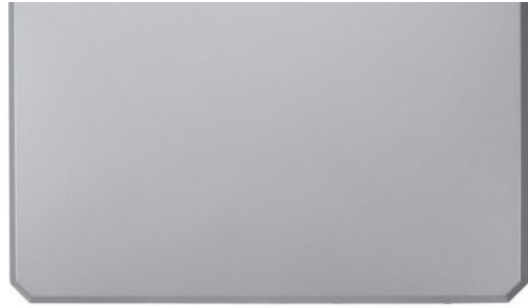
[READ MORE](#)



Dual-Band Patch Antenna (8/6.5 dBi Gain)

\$349.00

[READ MORE](#)



Dual-Band Sector Antenna (13 dB Gain)

\$1,499.00

[READ MORE](#)



2.4 GHz Sector Antenna (11 dBi Gain)

\$349.00

[READ MORE](#)



5 GHz Sector Antenna (13 dBi Gain)

\$349.00

[READ MORE](#)



Dual-Band Sector Antenna (9/12 dBi Gain)

\$349.00

[READ MORE](#)



MA-MNT-MR-16 (MR76/86)

\$49.00

[READ MORE](#)

Downloads

[Meraki Wi-Fi 6 Whitepaper](#)

[MR Family Datasheet](#)

[ONLINE DOCUMENTATION](#)



COMPANY

- [About Meraki](#)
- [Careers](#)
- [Privacy](#)
- [Trust](#)
- [GDPR](#)
- [Terms of Use](#)

GET STARTED

- [Contact us](#)
- [Get a demo](#)
- [Start your trial](#)

PARTNERS

- [Partner Portal Login](#)
- [Become a Partner](#)
- [Managed service providers](#)
- [Service providers](#)

RESOURCES

- [Webinars](#)
- [Documentation](#)
- [Community](#)



© 2020 Cisco Systems, Inc.

