

# NSR2900X-14D MPLS Access Router


## Datasheet

### Overview

The NSR2900X-14D modular access router by Maipu is a new-generation enterprise-class router designed for small and medium-sized branch offices of enterprises and government agencies. It integrates diverse WAN technologies, including Ethernet, SDH, and 5G/4G/3G networks, offering flexible access options for enterprise users.

The NSR2900X-14D combines routing, switching, and security functions, supporting robust encryption algorithms to ensure data security. Its LAN L2/L3 switching capabilities significantly enhance the flexibility of fixed interfaces.

The NSR2900X-14D has one RJ45 console port, one USB interface, 2\*10GE SFP+ WAN ports, 2\*GE SFP WAN ports, 4\*GE RJ45 WAN ports, 24\*GE RJ45 LAN ports, four expansion slots, dual AC power supply.

Model Name	Specification
 <p data-bbox="306 1384 512 1413"><b>NSR2900X-14D</b></p>	<ul style="list-style-type: none"> <li>● Fixed 10GE WAN Ports: 2*10GE SFP+</li> <li>● Fixed 1GE WAN Ports: 2*GE SFP + 4*GE RJ45</li> <li>● Fixed 1GE LAN Ports: 24*GE RJ45</li> <li>● Extension Slots: 4*NRM2 extension slots</li> <li>● Power Supply: 2*AC Power Supply</li> <li>● One RJ45 Console Port</li> <li>● One USB2.0 Port</li> <li>● Dimension (L*D*H): 442mm*380mm*44.3mm(1U).</li> </ul>

# Highlights

Highlights	Benefits
Flexible uplink	NSR2900X-14D integrates fixed WAN and LAN interfaces. The WAN uplink supports various mainstream WAN access link technologies, such as Ethernet, 5G/4G, E1/CE1, POS, and V.35 serial line.
Extensible modular slots	NSR2900X-14D is modular designed. The whole device supports 4 extended slots.
High performance	Multi-core high performance processor. 1/10G high-speed Ethernet WAN port. Built-in hardware acceleration engine, high encryption performance. Maipu Express Forwarding (MEF) technologies, speeding up forwarding and processing of data packets.
5G Ready	NSR2900X-14D is designed for future 5G networks, with higher throughputs with 5G NR. WAN networks are looking at wireless WAN as primary transports for different use cases for improved throughputs and latency.
LAN Integrated Hardware	NSR2900X-14D supports up to 24 fixed 10/100/1000M switching LAN ports, providing the IP terminal access capability and meeting the requirement of the user for integrating the routing and switch to construct the access network.
Rich software features	Support multiple WAN protocols: DDR, PPPoE, NDIS, EDP, 5G/4G, etc. Support typical TCP/IP services: DHCP, DNS, NAT, ACL, etc. Support rich QoS features: PQ, FQ, CBWFQ, H-QoS, WRED, etc. Support fast convergence protocols: BFD, FRR, etc. Support Segment-Routing protocols: SR-MPLS, SRv6. Support full routing protocol: Static, RIP, OSPF, IRMP, BGP, ISIS, etc. Support rich VPN protocol: DMVPN, IPSec, GRE, L2TPv3, VPLS/MPLS, etc. Support time synchronization protocol: NTP, PTP(IEEE1588v2),etc. Support IPv6 protocols: Static Routev6, RIPng, OSPFv3, IS-ISv6, BGP4+, etc.
High reliability and business continuity	Support 220V AC redundant power supply. Redundant WAN connection for failover protection and load balancing. Dynamic failover protocols such as VRRP/VBRP, backup interface, track IP.
Easy O&M	Multiple management methods: standard SNMP monitoring and management, Web-based GUI, SD-WAN based management, traditional command line interface. Built-in Embedded Event Platform (EEP), allow the customer to monitor critical event, and automatic execute pre-defined actions.
Security	Provide Port Security, 802.1X, DHCP Snooping ,etc. Provide CPU Protection, Anti-attack, etc.
ZTP	Zero-Touch (USB, DHCP, EDP...), easy for installation and configuration.

# Technical Specifications

## Hardware Specification

Hardware specification	NSR2900X-14D
Hardware Version	V2
CPU	4-Core
Memory (GB)	2GB
Flash (GB)	8GB
Fixed 10G WAN Interfaces	2*10G SFP+ WAN Ports
Fixed 1G WAN Interfaces	2*GE SFP and 4*GE RJ45 WAN Ports
Fixed 1G LAN Interfaces	24*GE LAN Ports
Max. Throughput (1400 Byte)	14Gbps (WAN-to-WAN)
IPSec VPN Tunnels	500-1000
NRM2 Extension Slots	4*Slots
USB Port	1
Console Port	1
Dimension (L*D*H)	442*380*44.2mm(1U)
Power Supply	2*AC Power Supply (100V-220V, 50-60Hz.)
Power Consumption	≤86W
Working Temperature	0°C~45°C
Working Humidity	5%-85%/RH
MTBF (Hours)	≥100,000 Hours

## Software Specification

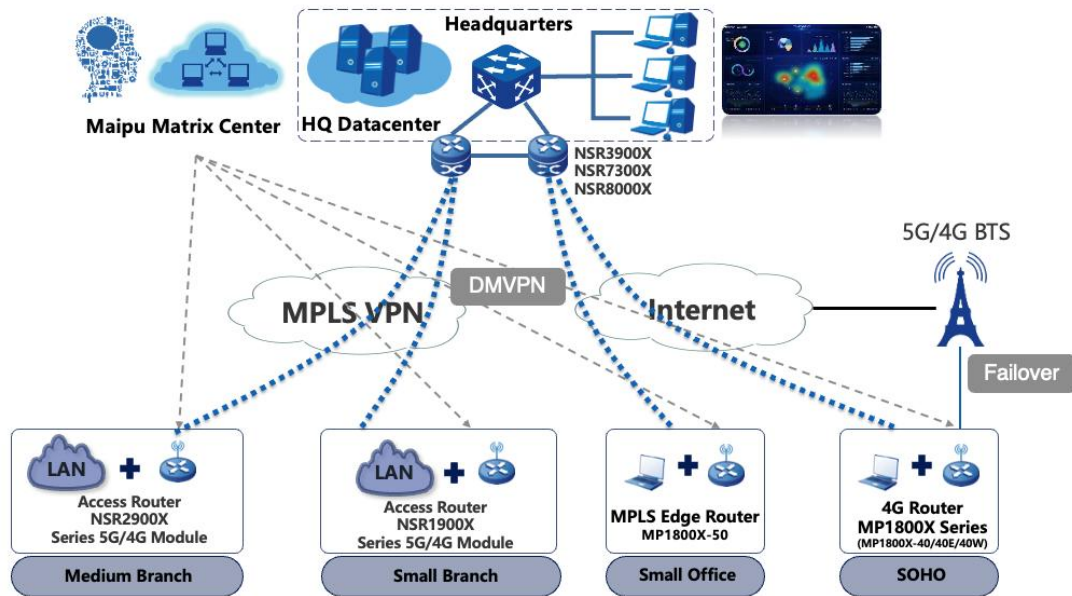
Software features	
WAN Protocol	DDR, NDIS, PPPoE, Bridge Group, Virtual Ethernet, HDLC, Frame Relay
LAN Protocol	STP/RSTP/MSTP, MAC Management, 802.1Q VLAN, Q-in-Q Termination, LACP, Loopback Detection, SPAN, LLDP, Port-isolate, Error-disable, ULFD, Port Security, Voice VLAN
TCP/IP Protocol	DHCP, DNS, DDNS, NAT, NAT64, NAT66, NAT ALG, IPIP
IPv4 Routing protocol	Static, RIP, OSPFv2, IRMP, IS-IS, BGP, Policy Routing, VRRP

IPv6 Routing Protocol	IPv6 Static, RIPng, OSPFv3, IS-ISv6, BGP4+, PBRv6, VRRPv3
IPv6 Other Protocol	IPv4/IPv6 Dual-Stack, IPv6 ND, IPv6 PMTU, IPv6 ACL, ICMPv6, DNSv6, DHCPv6, GREv6, IPv6 over IPv4, 6to4, ISATAP
Multicast Protocol	IGMP v1/v2/v3, PIM-DM, PIM-SM, PIM-SMv6, SSM, MVPN, NG MVPN, MSDP, IGMP Snooping, MLD, MBGP
VPN Protocol	DMVPN, IPsec, GRE, L2TPv2, L2TPv3
MPLS Protocol	MPLS LDP, MPLS L3VPN, MPLS VPLS, MPLS VPWS, MPLS TE, MPLS VRF, IP FRR, LDP FRR, TE FRR, MPLS OAM, 6PE
Segment Routing Protocol	Network Slicing, Segment-routing MPLS, Segment-routing IPv6
Security Protocol	CPU protection, DHCP Snooping v4/v6, IP Source Guard v4/v6, Dynamic ARP Inspection, AAA, 802.1X, PKI, IKE, ACL, Anti-attack, ASPF, SSAC, SECP, Portal Redirection, DPI, IPS, URL Filtering
QoS Protocol	FIFO, PQ, FQ, WFQ, CBWFQ, LLQ, RSVP, CAR, H-QoS, GTS, MPLS RSVP, QPPB, SPQ
Reliability Protocol	Backup interface, Keepalive, VRRP/VRRPv3, VBRP, rack, BFD/BFDv6, ULFD
Time Synchronization	IEEE1588v2, PTP over MAC, PTP over UDP, BC mode, E2ETC mode, P2PTC mode.
SDN Protocol	EDP, IPFIX, IFIT, BSM, Telemetry, Netconf, VxLAN, EVPN
Management & Monitoring	CLI, SSH, HTTP/HTTPS, SNMP V1/V2/V3, NTP, EEP, RMON, Telnet, PING, Trace Route, Login, FTP, TFTP, TR069, IP-SLA

# Application Scenario

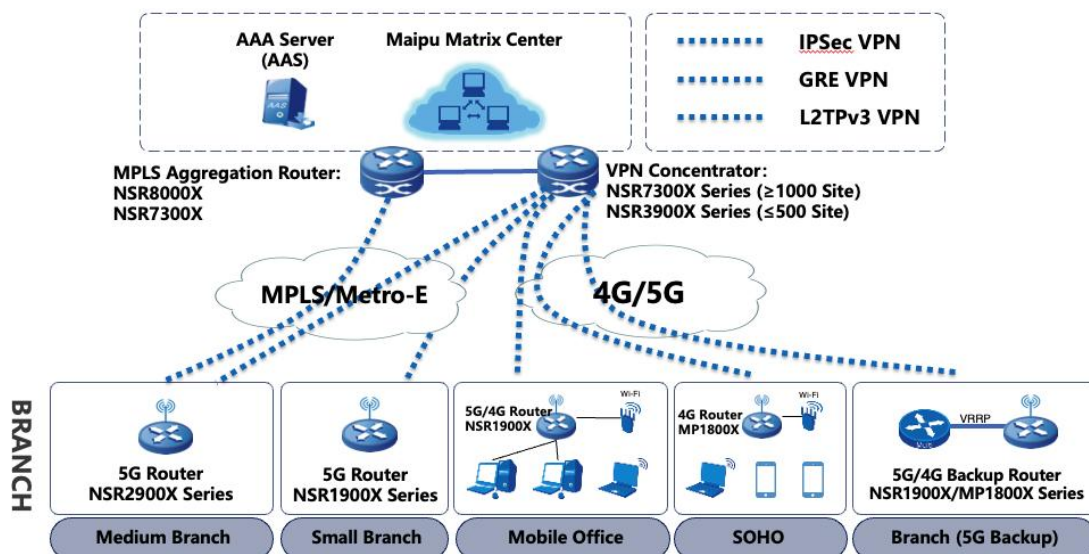
## Enterprise Leased Line Solution

Maipu offers a comprehensive enterprise WAN network solution. The NSR1900X/NSR2900X series access routers are designed for enterprise branch offices and support multiple leased line networks, including MPLS or SDH links. The NSR3900X/NSR7300X/NSR8000X series aggregation routers are intended for enterprise headquarters. Maipu Matrix View is an SNMP centralized management platform.



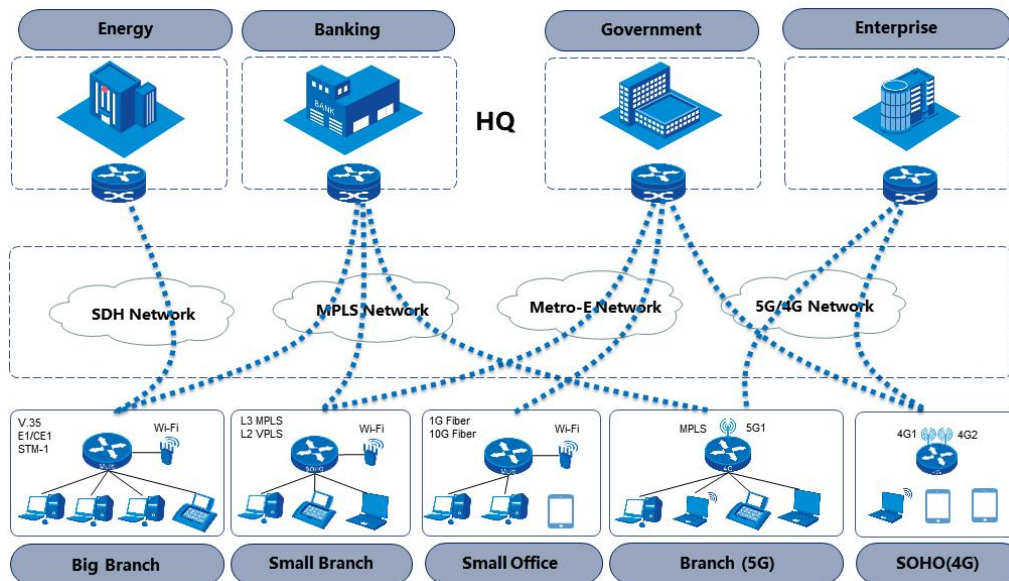
## Enterprise VPN Solution

The Maipu NSR1900X/NSR2900X series routers offer various VPN access functions for secure communication between branch offices and headquarters over internet. Secure tunnels such as GRE, L2TP, IPsec, and DVPN can be established between HQ and branches to ensure secure data access and transmission.



## Telecom Managed CPE

Telecom deploys NSR1900X/NSR2900X series access routers as CPE routers at enterprise branch offices. These routers support various WAN access modes, including SDH, MPLS, Metro-E, and 5G/4G links, making them compatible with most telecom WAN networks.



## Order Information

Router Host	
Host model	Description
NSR2900X-14D	V2 Version: One RJ45 Console Port, 2*10G SFP+ WAN Ports, 4*1000M RJ45 and 2*1000M SFP WAN Ports, 24*1000M RJ45 LAN Ports, 4*NRM2 Slots, Dual AC Power Supply
NRM2 WAN Module	
Modules	Description
NRM2-4E1	V6 Version: Four-port non-channelized E1 WAN module
NRM2-4CE1	V2 Version: Four-port channelized E1 WAN module
NRM2-2SA	V1 Version: Dual-port high-speed V35 serial WAN module
NRM2-4GEF	V1 Version: Four-port gigabit Ethernet fiber WAN module
NRM2-4GET	V3 Version: Four-port gigabit Ethernet RJ45 WAN module
NRM2-4G-LTE-A	V1 Version: NRM2-4G-LTE-A 4G module, 1*SIM slot, LTE-FDD (band: 1/3/5/8), TD-LTE (band: 38/39/40/41), WCDMA (band: 1/8)
NRM2-5G-M	V2 Version: NRM2-5G-M 5G module, 1*SIM slot, support NSA and SA, Support 5G NR (Band:1/28/41/77/78/79); LTE-FDD (Band:1/2/3/5/7/8/20/28), LTE-TDD (Band:34/38/39/40/41), WCDMA (band:1/2/5/8)
NRM2-1POS-OC3	V1 Version: One-port 155M non-channelized OC3 WAN module

All rights reserved. Printed in the People's Republic of China.

No part of this document may be reproduced, transmitted, transcribed, stored in a retrieval system, or translated into any language or computer language, in any form or by any means, electronic, mechanical, magnetic, optical, chemical, manual or otherwise without the prior written consent of Maipu Communication Technology Co., Ltd.

Maipu makes no representations or warranties with respect to this document contents and specifically disclaims any implied warranties of merchantability or fitness for any specific purpose. Further, Maipu reserves the right to revise this document and to make changes from time to time in its content without being obligated to notify any person of such revisions or changes.

Maipu values and appreciates comments you may have concerning our products or this document. Please address comments to:

*Maipu Communication Technology Co., Ltd*

No.16, Jiuxing avenue

Hi-Tech Zone

Chengdu, Sichuan Province

P. R. China

610041

Tel: (86) 28-65544850,

**Fax:** (86) 28-65544948,

**URL :** <http://www.maipu.com>

**Email:** [overseas@maipu.com](mailto:overseas@maipu.com)

All other products or services mentioned herein may be registered trademarks, trademarks, or service marks of their respective manufacturers, companies, or organizations.



**FACEBOOK**



**LINKEDIN**